

Membership Application



Membership



Name(s) _____

Address _____

City _____

State _____ Zip _____

Phone _____ e-mail _____

Membership in the St. Louis Area Historical Society is open to anyone interested in the past, present, or future of St. Louis. Members receive a monthly newsletter, published by the Society, that keeps members informed of all activities, meeting dates and times, as well as progress of the Society. There are also programs of interest throughout the year.

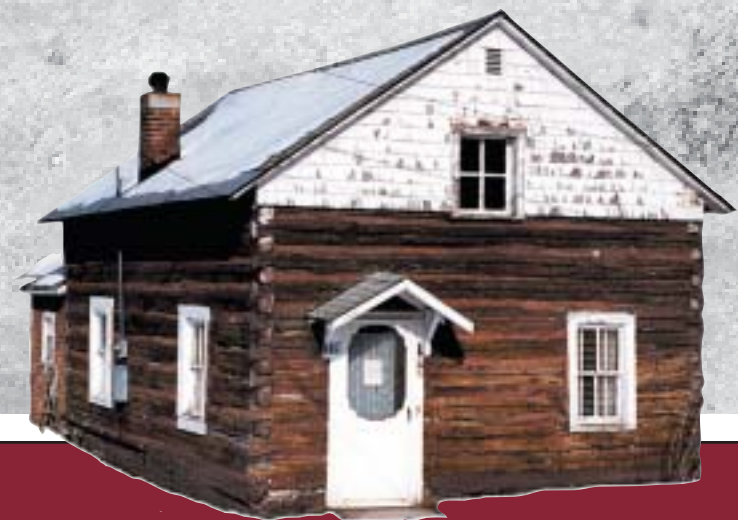
The St. Louis Area Historical Society is organized exclusively for charitable, educational, and scientific purposes. The Society is a nonprofit, 501(c)(3) organization and acquires its income through membership dues, sale of souvenirs, donated merchandise, government and private grants, and annual fundraisers.

Check Membership Type

- Individual Membership (\$15)
- Family Membership (\$20)
- Friend of Society (\$50-\$90)
- Patron (\$100-\$199)
- Benefactor (over \$200)

Mail to:

St. Louis Area Historical Society
P.O. Box 273
St. Louis, MI 48880



110 East Crawford Street
St. Louis, MI 48880

Making History

The St. Louis Area Historical Society is located in St. Louis, Michigan, a small town with a population of approximately 5,000, and affectionately called the "Middle of the Mitten," due to its geographical location in the very center of Michigan.



The Society was organized in May of 1996. At first, members gathered in a meeting room in the basement of a local bank. By December of the same year, the Society received, as a gift, an old building on Mill Street, the main shopping area in the city.

Soon the Society received gifts of memorabilia concerning the early days of St. Louis, including many old photographs of activities on Mill Street, and city artifacts.

In July 1999, the Society sold its first building and purchased the present museum and meeting place, the old Chesapeake and Ohio Railroad Station, located at 110 East Crawford Street. The depot, built in 1873, had been vacant since the 1960s. The Society has renovated the building for use as its museum.

In July 1997, the Society received a government grant to purchase an old log cabin, which was one of the first homes in the St. Louis area. The cabin was relocated across the street from the depot and is being restored to its original state. The Society has also purchased additional property adjacent to the depot, and is in the beginning stages of developing an "historical park."

Come Visit Us

The Society also has a series of 10 Fenton glass bells, postcards, mugs, crocks, and reproduction photographs for sale at the museum.

MUSEUM OPERATING HOURS:

Thursday 1 - 4 PM
Special times and tours can be arranged by request

Call the Society at
(989) 681-4636

Visit us on the World Wide Web at:
www.rootsweb.com/~mislahs

