



stlouismi.com

City of St. Louis
Five-year
Parks & Recreation Plan
2023-2027

The City of St. Louis Parks and Recreation Five Year Master Plan was prepared in 2022 by the St. Louis Park and Recreation Commission and the City of St. Louis.

It was adopted on January 9, 2023 by the Park and Recreation Commission; the City Council approved the Plan by resolution on January 17, 2023; and the St Louis Board of Education approved the Plan by resolution on January 16, 2023.

Park & Recreation Commission

Mary Reed, Chairperson
Kristy Hardy, Vice-Chairperson
Craig Zeese
Dorothy Trgina
Tom Reed
Renaе Wolfe
Randall Mead

City Council

Tom Reed, Mayor
Roger Collison, Mayor Pro-Tem
George Kubin
Bill Leonard
Liz Upton

Board of Education

Carrie Salladay, President
Kelly Bebow, Vice President
Don Kelley, Secretary
John Pavlik, Treasurer
Carrie Beeson
Chad Clark
William Bosquez

City Manager

Kurt Giles

School Superintendent

Jen McKittrick

TABLE OF CONTENTS



Introduction	1
Community Description	3
Administrative Structure	6
Budgets	6
Role of Volunteers	7
Relationships with School Districts, Other Public Agencies & Private Organizations	7
DNR Grant Funded Projects	7
Recreation Inventory	9
St. Louis Inventory of Parks/Facilities	9
Park Location Map	10
Other Recreational Facilities	11
Programming	12
Park Classification	12
Barrier-Free Compliance	13
Community Input	16
Online Survey	16
Draft Plan and the Public Meeting	19
Goals and Objectives	20
Five Overall Goals	20
Coordination of Planning	22
Action Program	24
Accomplishments	24
Non-Motorized Trail Plan Summary	24
Waterfront Plan Summary	27
Leppien Park Summary	29
Velsicol Site Summary	30
Barnum Park Summary	31
Clapp Park Summary	32
Penny Park Summary	33
Lions Park Summary	33
Lincoln Street Park Summary	34



W.T. Morris Memorial Pool Summary	34
Hubble Field/Carrie Knause Elementary Summary	35
Michigan Avenue Boat Launch.....	36
Other Projects	36
St. Louis Area School District.....	36
<i>Plan – Non-Motorized Trail Conceptual Plan</i>	<i>37</i>
<i>Plan - Waterfront Development Plan</i>	<i>38</i>
<i>Plan - Leppien Park Conceptual Plan.....</i>	<i>39</i>
<i>Plan - Velsicol Conceptual Site Plan</i>	<i>40</i>
<i>Plan - Barnum Park Conceptual Plan.....</i>	<i>41</i>
Planning Process.....	42
Appendix A – Public Input Documentation	44
Appendix B – Potential Funding Sources for Parks and Recreation Projects	56
Appendix C – Adoption Documentation	60



INTRODUCTION

The City of St. Louis has developed this plan as a Parks and Recreation Master Plan to serve as a guideline to improve recreation facilities and develop new recreational opportunities in the community. To that end, this document forms the basis to guide policy for implementation of improvements and new initiatives that will meet the recreational goals and interests for the City of St. Louis and its constituents. The plan was prepared with assistance and guidance from the City of St. Louis Parks and Recreation Commission and School Superintendent. With the involvement of each of these agencies, this plan is the result of joint efforts between the City of St. Louis Parks & Recreation Commission and the St. Louis Public Schools and should be used to guide evaluation and decisions for future park improvements, development, land acquisition or other community issues regarding recreation opportunities for community residents' leisure time activities.

Before any Parks and Recreation Master Plan can be adopted and enacted, it is important to understand what the needs of the residents are, what recreational opportunities exist and what sort of programs and projects are needed for residents based on age, ability, population, density and the availability of recreational opportunities in neighboring communities. This plan carefully considered input and suggestions via active communication from community residents, City officials and other community stakeholders. This input is a critical component to this plan and it was used to develop a thoughtful plan geared towards making public improvements that enhance the quality of life in the St. Louis community.



W.T. Morris Memorial Pool

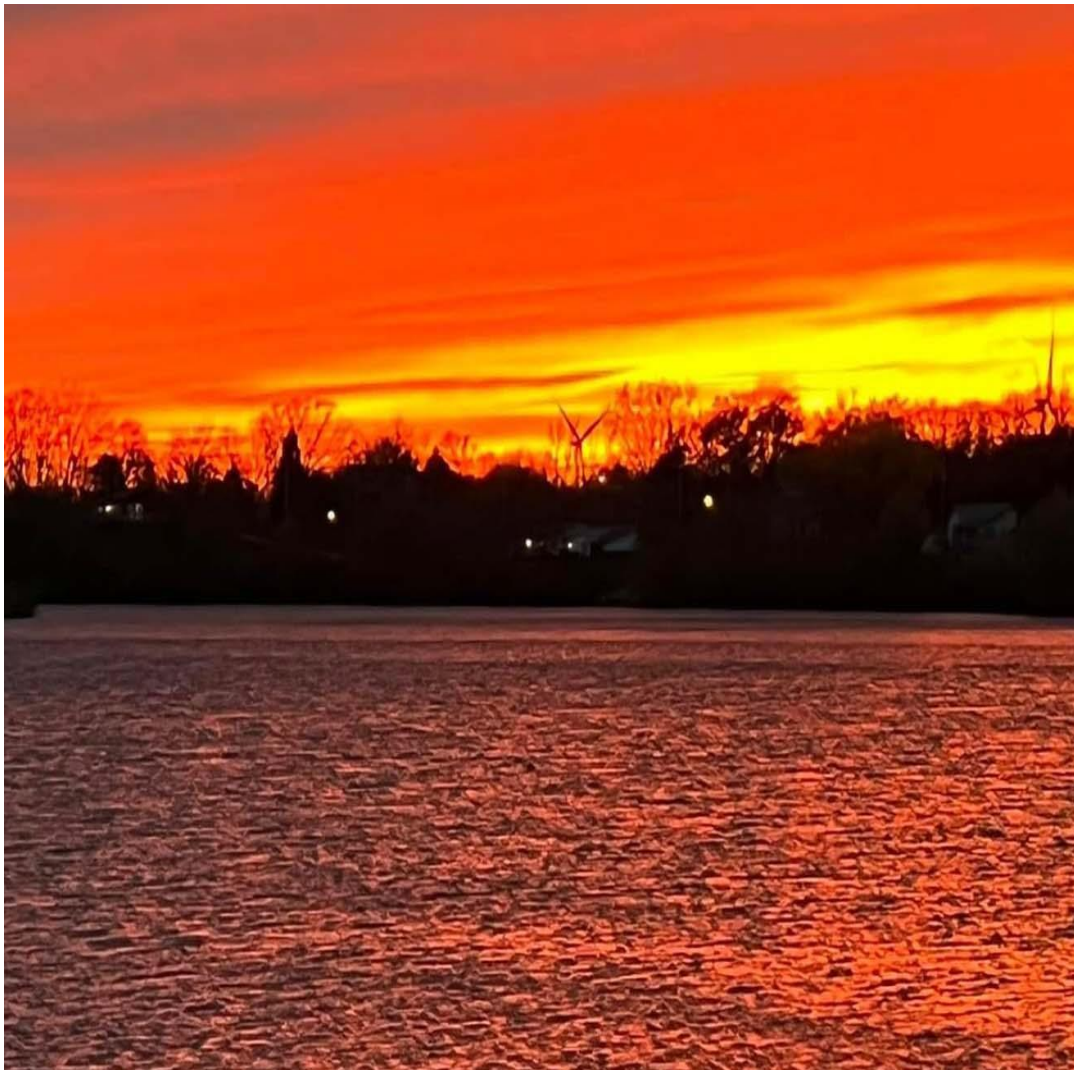
The foundation for the development of this plan was based on the following:

- Develop an overall Parks & Recreation Master Plan
- Develop individual Plans for the development of a community-wide non-motorized path system, the waterfront along the Pine River and conceptual site plans for Leppien and Barnum Parks and for the Velsicol Site
- Involve the community in the process to develop the plan
- Identify and map existing St. Louis recreational facilities
- Build common ground among St. Louis stakeholders in addressing the future recreational needs and priorities of the community
- Enable the City of St. Louis to be eligible for financial assistance based upon the plan
- Facilitate interagency collaboration in establishing recreational goals, objectives and actions, and
- Support the implementation of improvements for barrier-free, universal access to the City parks and recreational sites.

Broadly speaking, St. Louis officials intend to use this plan, in conjunction with other plans, to guide their work on all future recreational and park projects in the community. It is also a strategic document that articulates specific goals to various agencies and organizations that fund local recreational and park improvement projects.

This plan should be used in conjunction with the City’s land use documents, the Velsicol Redevelopment Plan, Riverfront Plan, Brownfield Redevelopment Plan, the Gratiot County-Wide Master Plan as well as other related plans to guide decision making for the future community. These planning documents are discussed in the Goals and Objectives chapter of this document.

This Community Parks and Recreation Master Plan is in accordance with Michigan Department of Natural Resources (DNR) requirements as stated in the “*Guidelines for the Development of Community Parks and Recreation Plans*”. For this purpose, the plan will be valid for a period of five years and will allow the community to pursue DNR-administered grants during that time frame.



View of the Pine River at sunset.

COMMUNITY DESCRIPTION

The Michigan Department of Natural Resources requires that a community’s Parks and Recreation Plan include physical characteristics and socioeconomic information that are significant to recreation. The following is a compilation of this information.

PHYSICAL CHARACTERISTICS

Location

The City of St. Louis is located in Gratiot County, which is in the central Lower Peninsula. The City of St. Louis lies approximately twenty miles south of Mt. Pleasant and 30 miles west of Saginaw. The City is bordered by Pine River Township to the west, the City of Alma to the southwest, and by Bethany Township to the east. The St. Louis School District reaches well beyond the St. Louis municipal boundaries and includes portions of six other townships that are spread across Isabella, Gratiot and Midland Counties. A map of the school district is shown on the following page.

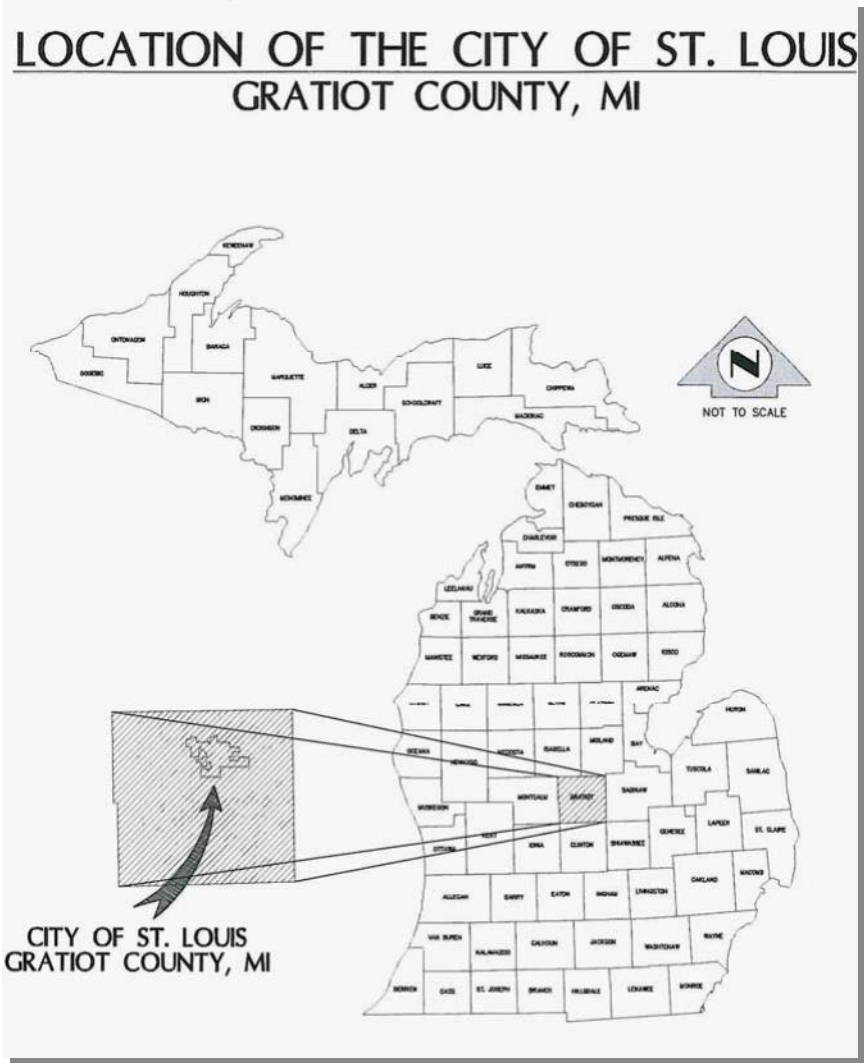


Figure 1. Location map.

Population

The non-institutionalized population of St. Louis has changed very little in the past 50 years; however, the addition of the State of Michigan Correctional Facilities in the 1990's has increased the overall population dramatically. This is shown in Figure 2. Regionally, the population for Gratiot County remained relatively stable from 2010 to 2020, with a 1.68% loss.

St. Louis Michigan Population Trends						
	1970	1980	1990	2000	2010	2020
Non-Institutionalized	4,107	4,101	3,828	3,527	3,659	3,805
Institutionalized	0	0	0	967	3,823	3,648
TOTAL	4,107	4,101	3,828	4,494	7,482	7,453

Figure 2. Population trends, City of St. Louis.

The St. Louis School District boundaries extend far beyond the City of St. Louis boundary, into Pine River, Bethany and Emerson Townships, all in Gratiot County, into Coe Township in Isabella County and into Jasper and Greendale Townships in Midland County. With the lack of recreational opportunities for this entire area, the City of St. Louis provides recreational opportunities for a much larger population. The City's population for recreation includes the population of the entire school district. The school district boundaries are shown on the map in Figure 3.

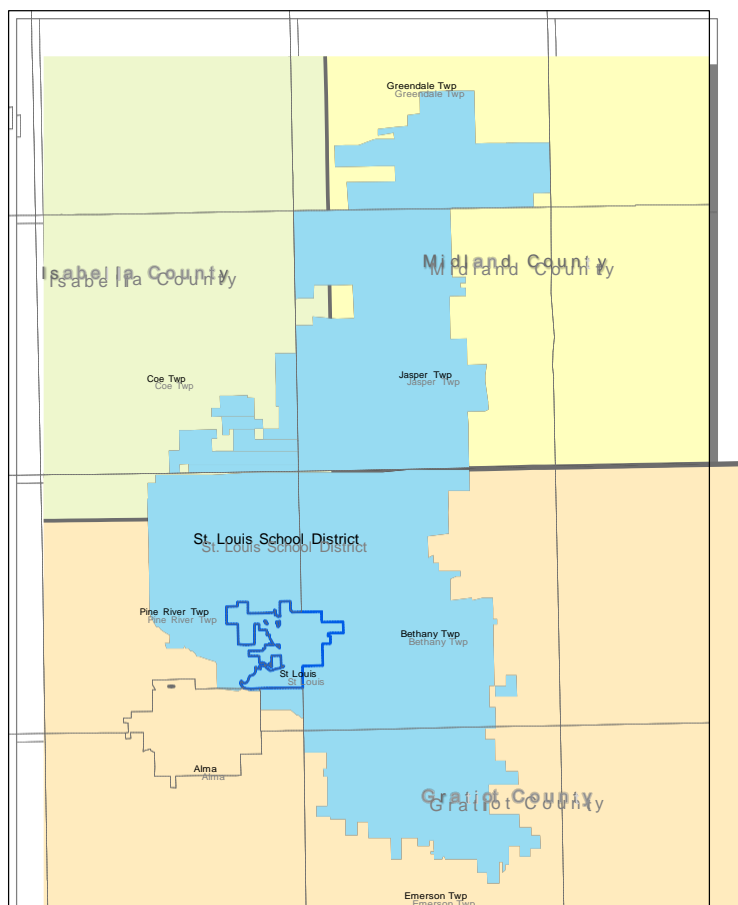


Figure 3. The St. Louis School District includes the City of St. Louis and portions of six townships in three different counties.

Transportation

Major thoroughfares that impact traffic in St. Louis are US-127 and M-46. St. Louis is also along the historic US-27 corridor. US-127 is a major north-south expressway in Michigan that is located two miles west of St. Louis. It has an average 24 hour traffic volume of approximately 15,000 to 20,000 vehicles near St. Louis. M-46 is the area's major east/west corridor that traverses the state. Approximately 10,000 vehicles per day travel in downtown St. Louis on M-46.

Water Resources

The primary body of water in the area is the Pine River, which flows through the City from the southwest and then east and northeast through the City. In recent years, the river has undergone an extensive cleanup and restoration effort by the United States Environmental Protection Agency as part of their Superfund Program in association with the Vesicol site remediation project. The river offers boating and fishing opportunities within the City as well as a scenic river walk located at Lions Park. The City would like to extend their river walk throughout the entire City along the riverfront and connect it with the City of Alma trail system, including the Fred Meijer Heartland Trail, to the southwest, and the proposed MDOT trail system to the northwest. The community will continue to support groups dedicated to maintaining and improving the river's water quality, including the Healthy Pine River organization.

Vegetation, Fish and Wildlife

Tree species native to the City include elm, ash, sugar maple, oak, tamarack and aspen. The largest wooded area in the City is located in the northwest near and around the Hidden Oaks Golf Course. Native wildlife includes open-land wildlife such as sparrows, hawks, rabbits, woodchucks and field mice. Woodland wildlife includes owls, woodpeckers, squirrels, raccoons and white-tailed deer. Wetland wildlife includes ducks, geese and killdeer. Fish species found in the Pine River include salmon, pike, large and small-mouth bass, bluegill, sunfish, rock bass, carp and suckers.

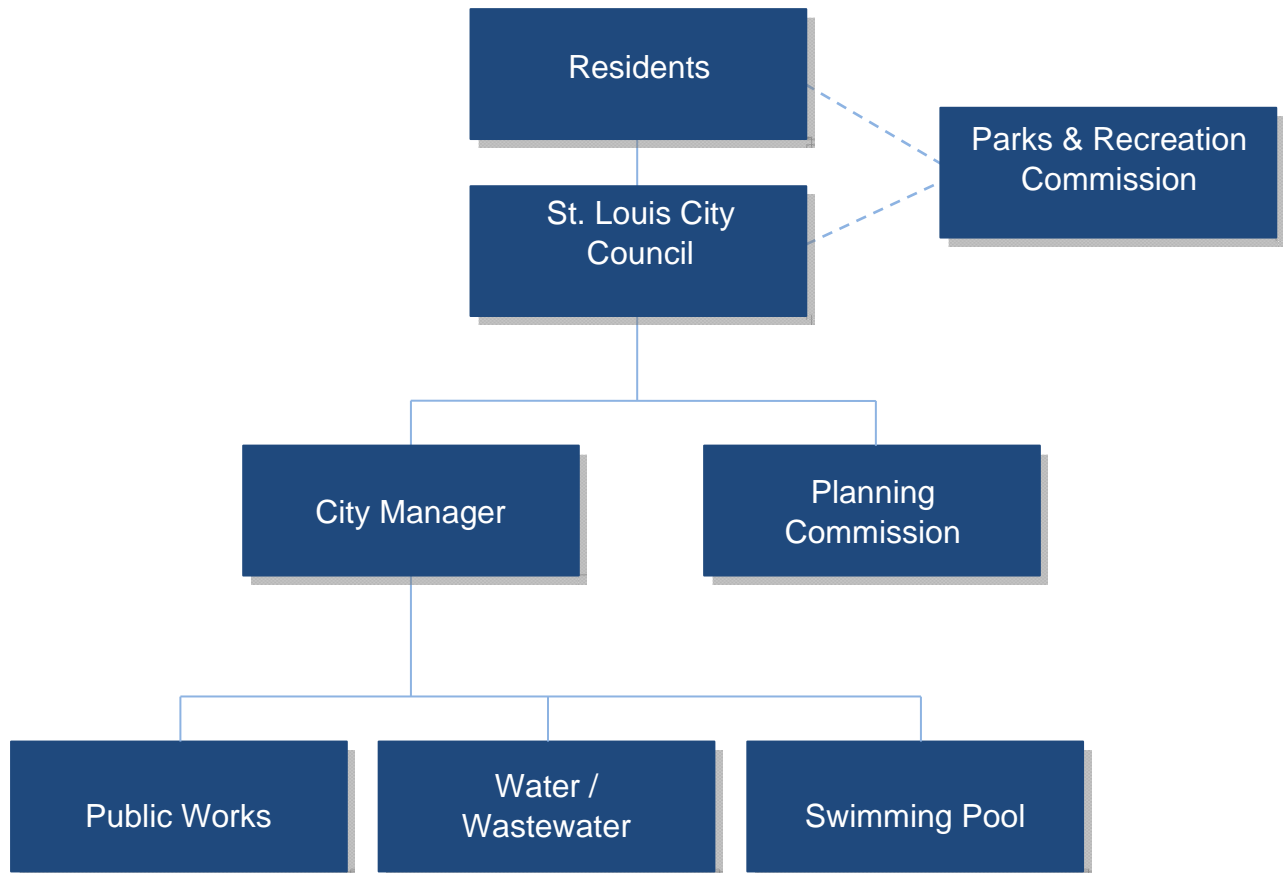


Wildlife on the Pine River in St. Louis.

ADMINISTRATIVE STRUCTURE

Parks and recreation functions in the City of St. Louis are handled by the Parks and Recreation Commission. Day-to-day management of the parks is handled by the City Manager. The seven members of the Commission serve on two-year terms and they serve as an advisory board to the St. Louis City Council. The Commission is responsible to make recommendations to the City Council for policy, planning and budgeting as it relates to the operation, maintenance and capital improvements of parks and recreation in St. Louis. Expenditures are approved by the City Council with recommendations from both the Commission and the City Manager. An organizational chart is shown in Figure 4.

Figure 4.
St Louis Parks and Recreation
Organization Chart



BUDGETS

Sources of funding for parks and recreation functions in St. Louis are from the City general fund, user fees, facility rentals and local donations. Grants and donations have been used to assist with funding for Capital Improvements.

St Louis Parks and Recreation Budgets		
	2021	2022
Operations and Maintenance	\$77,870	\$80,890
Programming	\$25,170	\$78,790
Capital Expenditure	\$228,100	\$11,200

Figure 5. Budget Information.

The City of St. Louis budgeted approximately \$94,600.00 for parks and recreation in 2021-2022 in addition to a \$87,640 budget to maintain and operate the swimming pool. Capital Improvement projects from 2018-2022 included new playground equipment and a new basketball court at Lincoln Park, a new playground structure at Penny Park and Leppien Park as well as an extensive renovation of the bath house at the W.T. Morris Memorial Swimming Pool. These capital improvements were made possible with support and generous community contributions and grants.

ROLE OF VOLUNTEERS

The St. Louis Garden Club helps with planting flowers and bed maintenance in the community. Volunteers also assist with organizing and running the Joe Scholtz Annual Free Fishing Derby. A local volunteer group built the gazebo in Clapp Park.

RELATIONSHIP WITH SCHOOL DISTRICTS, OTHER PUBLIC AGENCIES AND PRIVATE ORGANIZATIONS

Many years ago, the City of St. Louis and the St. Louis School District recognized the importance of a close working relationship between recreation departments and schools. Each agency works together to provide the necessary facilities and recreational programs for the community. The City uses schools and schools' athletic facilities for many activities, but also works closely with the school district to run programs in City parks and facilities.

MDNR GRANT FUNDED PROJECTS

The City has a proven track record for successful implementation of grant funded projects including the following Michigan Department of Natural Resources projects, as listed in MDNR records. All of the parks are still open, operational and using the amenities as described.

W.T. Morris Memorial Swimming Pool

LWCF Grant, 26-01592, 2002, \$90,000

This public swimming pool serves the City and school district with recreational opportunities in the summer months. The pool includes a bath house with



Leppien Park Shore Stabilization.

showers, restrooms and locker facilities. The outdoor pool is located at the north end of the Central Business District on Mill Street. In 2005, with the help of a Land and Water Conservation Fund Grant, the City replaced the existing 50-year old pool with a heated pool that is handicapped accessible, new deck and improvements to the bath house. This project included a \$200,000 community match. In 2019 the City completely renovated the bath house with the help of a \$50,000 from the Gratiot County Community Foundation and a \$20,000 grant from the W.T. Morris Foundation.

Leppien Park

DNR Trust Fund Grant, TF13-093, 2016, \$161,000

This project included construction and installation of a new boat launch, extensive shore stabilization and construction of a large pavilion.

Barnum River Park

DNR Fisheries Grant

Dedicated in 2002, this half-acre park is located on Main Street, two blocks north of M-46 along the Pine River near the St. Louis Electric Department Dam. Easy fishing access is provided by a barrier free wooden platform constructed through the help of a DNR Fisheries Grant. Park benches afford residents the opportunity to relax viewing the water and enjoying the excellent fishing provided by the waters of the Pine River. Parking is available on the north side of the park.



A view of Barnum Park during the Fishing Derby, along the bank of the Pine River, showing bank stabilization project.

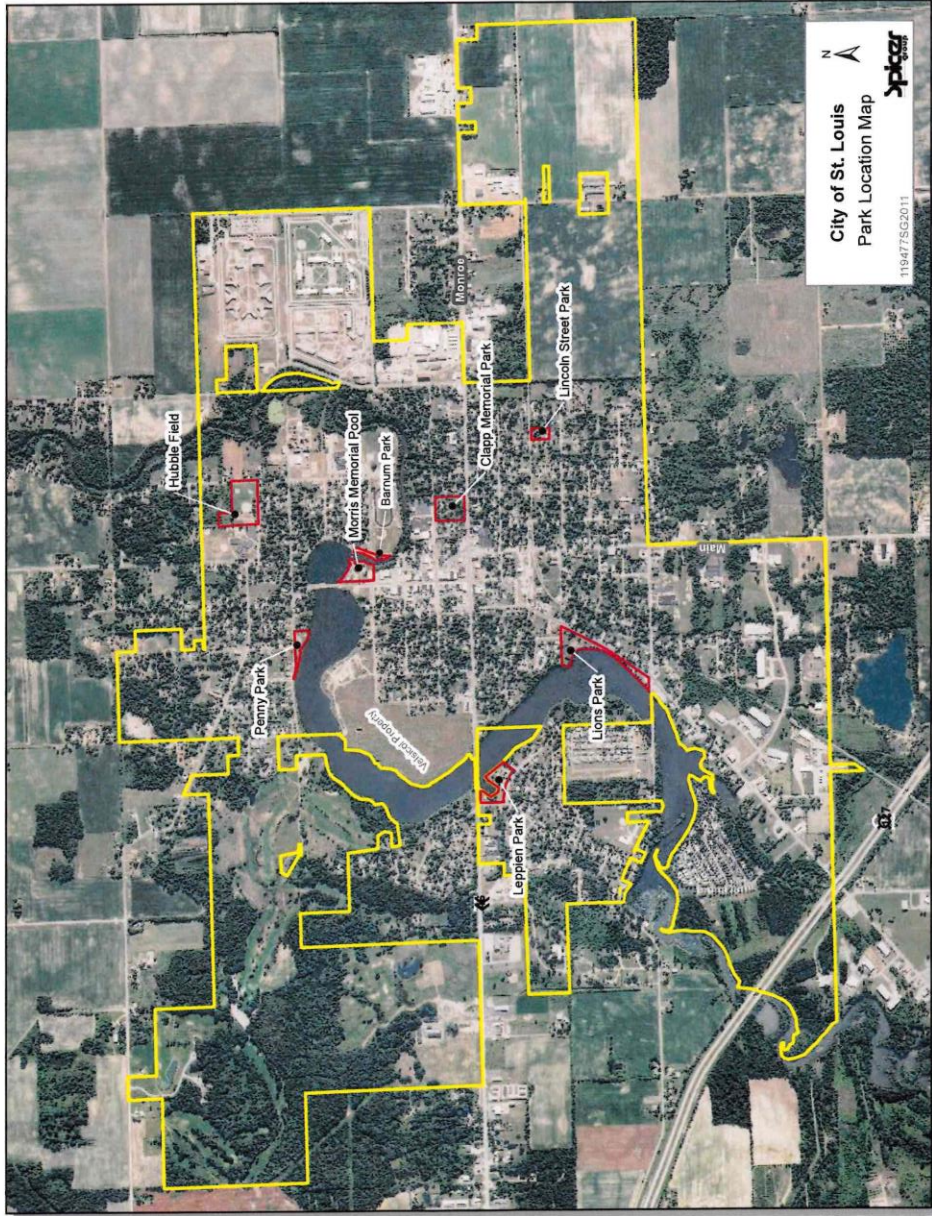
RECREATION INVENTORY

St. Louis owns eight developed parks and one undeveloped parcel, totaling 17 acres of park land. Figure 6 is a summary of the City of St. Louis recreational facilities. This inventory was taken from the most recent St. Louis Recreation Plan and then updated by City Staff. A park location map is included as Figure 7.

Figure 6. St. Louis Recreation Inventory.

Park Type	Name	Service Area	Facilities Available	Acres
CP	Clapp Memorial Park	Entire City	Picnic Area Playground Equipment Playfield Shelter/Pavilion – Capacity of 30 Gazebo	4
CP	Penny Park	Entire City	Picnic Area/grills Playground Equipment Playfield Waterfront Property Shelter/Pavilion – Capacity of 60	1.2
CP	Lions Park	Entire City	Picnic Area/grills Walking/Bike Path Playfield Waterfront Property Shelter/3 Pavilions – Capacity of 15 each	3
MP	Lincoln Park	½ mile	Picnic Area Playground Equipment Playfield Basketball Court	1.1
CP	Leppien Park	Entire City	Picnic Area/grills Playground Equipment and Playfield Pavilion – Capacity of 150 Waterfront Property Boat Launch	3.7
SU	W.T. Morris Memorial Pool	Greater St. Louis Community	Shelter Restrooms/showers Pool	1
CP	Barnum River Park	Entire City	Picnic Area Waterfront Property Fishing Pier	1
SP	Hubble Field (school owned)	Entire City	1 Softball Field/lighted 2 Peanut League Baseball Fields	1
NA	Undeveloped Parcel	NA	Future boat launch	1
Total Acres, City park land = 17				

Figure 7. Park Location Map



City of St. Louis Recreation Master Plan



OTHER RECREATIONAL FACILITIES

The City of St. Louis has several other private and school recreational facilities that are listed in the table below.

Figure 8. Other Recreational Facilities in the City of St. Louis.

Name	Facilities	Acres
Hidden Oaks Golf Course	18 Hole, Public Course	300+
St. Louis High School	Baseball Diamond Basketball Football Outdoor Track Gymnasium Showers Pavilion	10
T.S. Nurnberger Middle School	Softball Diamond Tennis Courts Basketball Football Pavilion	6
Carrie Knause Elementary	3 Youth Baseball Fields Basketball Recreational area Playground Equipment Open Playfield Pavilion	10
Westgate Elementary	Ball Diamond Basketball Football Playground Equipment	9
Nikkari Elementary	Basketball Football/Soccer Playground Equipment	8
School Woods Property	Picnic Area Open Playfield Nature Trails Shelter Restrooms	20
Camp Monroe (school property)	Basketball Picnic Area Playground Equipment Open Playfield Nature Trails Shelter Restrooms	70
CSA Hall	Baseball Field	5
Total Acres, other park land = 438+		

PROGRAMMING, ACTIVITIES & EVENTS

The City of St. Louis provides swimming lessons and water aerobics each summer at the W.T. Morris Memorial Pool and hosts the annual Joe Scholtz Free Fishing Derby at Leppien Park as well as an Easter Egg Walk and Trick or Treat event downtown. Downtown classic car cruise-ins, the Homecoming and Christmas Parades, Old US-27 Motor Tour and Middle of the Mitten Golf Outing provide fun and recreation, while the 4th of July Fireworks display packs all the park areas with families that day. The City also has an ordinance allowing ORV's to operate on certain City streets.



Fourth of July activities in Clapp Park.

With joint efforts between the City and School District, a busy Community Education program is provided through the schools offering classes and events. St. Louis also has a fine youth baseball and softball program organized and managed by local volunteers.

PARK CLASSIFICATION

The City of St Louis parks are classified using the following system which is adapted from one used by the Michigan Department of Natural Resources. The classification of each park can be found in Figure 6.

- *Mini Park (MP)* - Used to address limited, isolated or unique recreational needs. Typically located in a residential setting with a service area of ½ mile or less. Size of the park usually one acre or less.
- *Neighborhood Park (NP)* - Neighborhood parks remain the basic unit of the park system and serves as the recreational and social focus of the neighborhood. Focus is on informal active and passive recreation. They are usually 3-10 acres in size. Since St. Louis is a small community, Neighborhood Parks typically serve the entire City.
- *Community Park (CP)* - Serves broader purpose than neighborhood park. The focus is on meeting community-based recreation needs, as well as preserving unique landscapes and open spaces. They are typically larger than neighborhood parks but can be the same size or smaller if meeting a specific community recreation need. Community parks serve the entire community and their special and unique facilities can attract visitors from beyond the community borders.
- *School Park (SP)* - Depending on circumstances, combining parks with school sites can fulfill space requirements for other classes of parks, such as neighborhood, community, sports complex and special use. Size can vary depending on facilities offered. Service area is typically the entire community.
- *Special Use (SU)* - Covers a broad range of parks and recreation facilities oriented toward single-purpose use. In St. Louis, the Morris Memorial Pool facility is an example of a Special Use Park.

The City of St Louis has approximately 17 acres of City park land and 43 acres of school property, for a total of 60 acres of recreational land for its 7,453 citizens. General industry standards would suggest 5 - 10 acres of regional park land per 1,000 citizens, or approximately 37 - 75 acres of regional park land for the City of St. Louis. If you reduce the population by the institutionalized prison population, or to 3,805 citizens, general industry standards would suggest only 19 – 38 acres would be recommended. This would suggest that St. Louis has adequate park land for its citizens.

Conversely, more recent park guidelines indicate that one must also consider the “Level of Service” desired by the community. If St. Louis residents’ needs are met with the existing 17 acres of City Park land, then that amount is sufficient. This is why the community input portion of a recreation plan is so important. The Parks & Recreation Commission needs to understand the wishes of the community it serves.

BARRIER-FREE COMPLIANCE

The City of St. Louis recognizes the importance of providing recreational opportunities to people with accessibility limitations. With the passage of the Americans with Disabilities Act of 1990 (ADA), along with the most recent update in 2010, all areas of public service and accommodation became subject to barrier-free requirements, including parks and recreation facilities and programs.



Pool and accessible lift at W.T. Morris Memorial Pool.

The following summaries address the accessibility of the City of St. Louis parks and recreation facilities in compliance with the Americans with Disabilities Act. In general, all construction since 1991 has complied with these guidelines.

A general ranking for each park was based on the following scoring system, developed by the DNR, and each park score was determined through site visits as follows:

Accessibility Grade	Definition
1	None of the facilities/park areas meet accessibility guidelines
2	Some of the facilities/park areas meet accessibility requirements
3	Most of the facilities/park areas meet accessibility requirements
4	The entire park meets accessibility Requirements
5	The entire park was developed/renovated using the principles of universal design

Figure 9. Accessibility Grading System (DNR).



Clapp Park

Accessibility Grade: 3

Clapp Park is generally accessible, however; there are conflicts that could make it difficult for barrier free use.

Current ADA conflicts at this site include:

- No barrier free parking.
- No barrier free restrooms.
- Playground surface does not meet ADA standards.

Penny Park

Accessibility Grade: 2

Penny Park is generally accessible, however; there are conflicts that could make it difficult for barrier free use. Current ADA conflicts at this site include:

- Steep slopes are present near the playground.
- No good means of wheel chair access from parking area to playground.
- Sidewalk may be too steep in certain sections.
- Playground surface does not meet ADA standards.

Lions Park

Accessibility Grade: 2

Lions Park is generally accessible, however, there are conflicts that could make it difficult for barrier free use.

Current ADA conflicts at this site include:

- Steep slopes are present throughout the park including from the parking area to the trail and from the trail to the pavilion.
- A 100' section of the riverbank near the pathway is slowly eroding towards the river.
- The parking lots are not paved and there is no barrier free parking.

Lincoln Park

Accessibility Grade: 2

Lincoln Park is generally accessible, however, there are conflicts that could make it difficult for barrier free use. Current ADA conflicts at this site include:

- Gravel parking lot may be difficult for barrier free users.
- No barrier free parking.
- No bathrooms.





Leppien Park

Accessibility Grade: 3

Leppien Park is almost completely accessible, however; there are conflicts that could make it difficult for barrier free use. Currently there are only two barrier free parking spaces and more are needed. Accessibility improvements were made in 2011 with a contribution from the Leppien family, which included accessible playground equipment, safety surfacing and sidewalks.

W.T. Morris Memorial Swimming Pool

Accessibility Grade: 3

Recently, there were several renovations made to the pool with the assistance of a grant through the Michigan Natural Resources Trust Fund. Included in the renovations were the additions of a barrier free pool lift as well as barrier free restrooms. There is a protective lip around the pool and a barrier free drinking fountain. Future improvements to this site could include close proximity barrier free parking and better barrier free ramps. The replacement of this 50-year old bathhouse to a more modern facility has been a priority.

Barnum River Park

Accessibility Grade: 3

Like the W.T. Morris Memorial Swimming Pool, Barnum River Park was a recipient of MRNTF grant funding for park improvements. This park was generally developed to ADA guidelines. Paved parking was added recently along North Main Street. Future improvements should include adding handicapped signage for dedicated barrier free spaces and the possibility of adding an ADA restroom facility.



Hubble Field / Carrie Knause Elementary

Accessibility Grade: 1

Current ADA conflicts at this site include

- No easy wheelchair access to ball fields or playground equipment.
- No accessible parking near ball fields (gravel drive only).
- No handles on playground equipment.
- Swing heights are high.
- Pea-stone gravel exists under playground equipment as opposed to recommended ADA surface.
- Basketball court surface is not in good shape.

The City wishes to improve accessibility at all of its parks and it will continue to work to remove the barriers and conflicts that are described above.

COMMUNITY INPUT

To comply with the Michigan Department of Natural Resources guidelines for the Development of Community Park, Recreation Open Space and Greenway Plans, the City of St. Louis offered two opportunities for public input along with a 30-day period for review and comment on the draft plan.

The first opportunity for public input was an online survey. The survey was available online for approximately four weeks in the spring and summer of 2022. Significant results are discussed below. The second public opportunity was the public meeting held after the 30-day review period and prior to the adoption of the plan.



St. Louis High School Football Field.

ONLINE SURVEY

The City of St. Louis opted to conduct an online survey to gather community input for the recreation plan. The online survey was made available for approximately four weeks in the spring and summer of 2022. E-mails with the survey link were forwarded to many residents and visitors encouraging them to complete the survey and forward the link to others and a story about the survey ran in the local newspaper. A summary of the survey results follows this paragraph. The complete results of the survey are contained in Appendix A.



Old US-27 Motor Tour in the City of St. Louis.

About the Respondents

315 people responded to the survey, with 89% residing in the City of St. Louis or in the St. Louis School District. 11 percent resided outside of the City of St. Louis and School District. Approximately 54% of the respondents were from households of three to five people. Another 21% were from households of two persons. The remaining respondents were from households of six or more (19%), or households of only one person (6%). The age of the respondent was distributed across several age groups from Under 18 to 65 and older.

People with Disabilities

Question 11 in the survey asked respondents about disabilities in their families and what types of improvements would make the City of St. Louis parks more user-friendly. Of the respondents who answered this question, 42.5% have no one with a disability in their family or know someone with a disability. Of the improvements for the parks, walking and biking paths received 52%, accessible restrooms 57.5% and additional sports fields 28.9%.

Visiting the Parks

Nearly 90% of those who responded said they had used a St. Louis Park during the past year. Twenty-five percent reported that they had visited a park more than 15 times.

Respondents were asked why they visit St. Louis parks in Question 2. The two most common responses were for casual or informal use such as picnicking or using a playground and for taking time to enjoy nature. Fitness and exercise such as walking, hiking or bicycling was the third highest response.

ANSWER OPTIONS	Response Percent
Casual/Informal Use (Picnic, Playground)	54.9%
Enjoying Nature	49.8%
Fitness and Exercise	30.5%
Fishing	23.5%
Participation in a Community Event	22.2%
Watching a Game of League Sporting Event	18.4%
Swimming at W.T. Morris Pool	17.5%
Participation in a Game w/Friends or w/ a League	11.7%
Boating/Canoeing/Kayaking	10.2%
Other (please specify)*	26.3%
Answered Question	315
Skipped Question	0

Figure 10. Reasons for visiting St. Louis parks.

Evaluating Existing Services

Question 6 asked respondents to evaluate the following four different aspects of St. Louis Parks as Very Good, Good, Neutral, Poor, or Very Poor:

- ✓ Variety of Facilities/Amenities
- ✓ Maintenance and Appearance
- ✓ Safety and Security
- ✓ Quality/Friendliness of Pool Staff

Respondents had quite favorable opinions about each of the aspects they were asked to evaluate. Over half of the respondents felt each aspect was either “very good” or “good”.

Additional Facilities or Amenities

Question 7 provided a list of recreational features and amenities. The respondents were asked to check those they felt were most needed in St. Louis and provide their own answers in the “other” box if applicable. A common theme among respondents was the desire for more Walking and Biking Paths as well as restrooms. Question 10 further asked respondents if it was important to add more trails and non-motorized pathways in the City of St. Louis to which nearly 77% responded with a Strongly Agree or Agree answer.



Aerial view of Clapp Park

Velsicol Site

Question 5 asked respondents about the redevelopment of the Velsicol site. Respondents gave their opinions on which items could be added to the park. Written responses were also given and can be found in the complete survey, located in Appendix A.

Pine River and Natural Areas

Question 9 asked respondents their feelings about the Pine River and natural areas in the community. Of the 315 who responded to the question, 74% felt the river and natural areas contribute a positive effect on their quality of life and feel it is important to enhance the natural resources and recreational opportunities along the Pine River in the City of St. Louis. Healthy Pine River, a local community group, continues to help St. Louis work on this topic.

Additional Written Comments

Respondents to the survey were given the opportunity to give additional input on what they like best and what they would improve about parks and recreation in the City of St. Louis. The responses to these questions can be found in the complete survey in Appendix A.

DRAFT PLAN AND THE PUBLIC MEETING

After the Park and Recreation Master Plan was completed, it was made available for public review for 30 days. Interested persons could view the plan in person at the St. Louis City offices. The 30-day review of the plan was advertised in the local newspaper, The Morning Sun, on December 15, 2022.

The final opportunity for public input was held on January 17, 2023 at the public hearing. The public hearing was held at the St. Louis City Hall. The hearing was advertised in The Morning Sun on January 6, 2023.

GOALS AND OBJECTIVES

Developing goals and objectives is an important part of the recreation planning process. The overall goal of a parks and recreation department is, obviously, to provide recreation opportunities for the community and/or region it serves. More specific goals must be based on the demographic characteristics of the population served, the physical and environmental characteristics of the area, and the input of the community.

Goals are the broadest level. They are overreaching and general. Objectives carry out the purpose of the goal. The Action Program is the last level and it identifies specific projects and programs. The Action Program can include organizational, staffing, programming, public information and operation and maintenance actions.

FIVE OVERALL RECREATION GOALS FOR THE FUTURE

The City of St. Louis formulated the recreation goals and objectives listed below based upon the characteristics of the overall community and the input received at the community input session. The goals and objectives listed below represent a flexible tool that will guide where resources are focused on regarding park and recreation maintenance and development versus a rigid capital improvement schedule. This format will allow decisions to be made based on changing conditions and take advantage of opportunities as they are presented to the community.

Top 10 Reasons Why Parks are Important

The National Recreation and Park Association maintains a top ten list of reasons why parks are important in the United States:

1. Public parks provide millions of Americans with the opportunity to be physically active.
2. Parks have true economic benefits.
3. Parks provide vital green space in a fast-developing American landscape.
4. Parks preserve critical wildlife habitat.
5. Parks and recreation facilitate social interactions.
6. Leisure activities in parks improve moods, reduce stress and enhance a sense of wellness.
7. Recreational programs provide organized, structured, enjoyable activities.
8. Community recreation services provide a refuge of safety for at-risk youth.
9. Therapeutic recreation is an outlet that individuals with disabilities have.
10. Public parks embody the American tradition of preserving public lands.

This list is from the article, *Top 10 Reasons Parks Are Important*, by Richard J. Dolesh, Monica Hobbs Vinluan, and Michael Phillips.

Goal 1: Pursue grants and develop partnerships and advocates to serve park needs

Continue to seek partnerships with other recreational providers and agencies and with neighboring communities to share ideas and provide non-competing programs and facilities. (Examples include but are not limited to civic groups, community groups, schools, etc.)

- Communicate with private developers on shared use arrangements or providing conservation easements, trail and park development as appropriate.
- Apply for grants to develop park facilities.
- Continue to utilize the Velsicol Property Re-Use Plan as well as pursuing other development options on the Velsicol Property such as a river walk.
- Partner with Gratiot County Parks on potential recreational additions and improvements.

Goal 2: Increase development of park facilities.

- Develop new recreational opportunities at the Velsicol Site, School Woods Property and other City/School owned parks and properties. Improve outdated playground equipment at all existing parks and bring up to ADA standards.
- Create a historically themed tourist area to coincide with the City’s Historical Society Depot Museum, as well as identify other historical sites within the City for State designation as well as tourist purposes. Promote interaction between the T.A. Cutler Memorial Library and the Historical Society given their proximity to each other.
- Identify and develop a site for an additional full-size baseball field.
- Identify and develop potential recreational opportunities for younger residents.

Goal 3: Promote non-motorized connections within existing facilities and neighboring communities.

- Utilize and expand on existing sidewalk to provide linkages to parks.
- Maintain routes as appropriate for all season use.
- Develop the path route to create a river walk/non-motorized path through the City of St. Louis along the Pine River and throughout the downtown and to connect with the City of Alma.

Goal 4: Establish key natural features / areas for conservation.

- Complete an inventory, land-use overlay and policies for conservation easements.
- Developments should recognize: limits of flood plain and forested land, outdoor recreation and green space and scenic, historic, educational and environmental significance. Judicious development should allow a close relationship with natural features without destroying them.

Goal 5: Pursue enhancement opportunities that are aesthetically and architecturally appealing throughout the Downtown and gateway areas of the City.

- Improve sidewalk connections between neighborhoods and each of St. Louis’ schools.
- Maintain, repair and add new sidewalks as well as Victorian street lights on an as needed basis to provide a safe and enjoyable environment to each user throughout the City.



Installation of new sidewalks in Clapp Park.

COORDINATION OF PLANNING

The goals and objectives in this plan are considered to be consistent with and reflective of several other planning documents from the community and region. Significant portions of each of these plans as each relates to parks and recreation are described below. Documents are available for review at the St. Louis City Hall or on the City’s web site.

City Master Plan

In 2011, the City of St. Louis joined with all other units of government in Gratiot County to create the Gratiot Regional Excellence and Transformation (GREAT) Plan. The 146-page document replaced all previous plans.

Velsicol Redevelopment Plan

In 2004, the City prepared a reuse planning report for the 54-acre Velsicol Chemical Corporation Superfund Site located along the south side of the Pine River in Downtown St. Louis. The Velsicol Plan suggests using a large portion of the Velsicol site for recreational use including 21.5 acres for community recreational fields, 5 acres for an amphitheater area, and 9 acres for a community park. These goals are being re-evaluated as the property becomes closer to being available for re-use.

Gratiot Master Plan

In 2011, Gratiot County completed a master plan that included all the units of government in Gratiot County. The resulting GREAT Plan took input from all the governmental units within the County, including the City of St. Louis and created one comprehensive plan. The document was revised and updated in 2017 and renamed the Gratiot Master Plan. It includes goals, objectives, and numerous strategies for achieving them. Goal 5 and its objectives relate directly to recreation:

Goal 5: Provide premier cultural and recreational resources.

Objective 5.1: Provide more public access to the waterfront

Objective 5.2: Provide a robust system of parks, trailways and other recreational opportunities

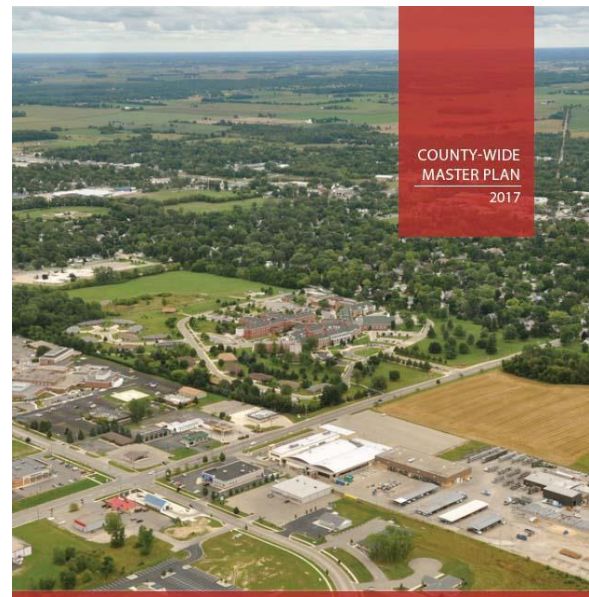




Photo rendering by the MSU STDI, at Clapp Park.

Small Town Design Initiative

In 2004-2005, the City of St. Louis worked with Michigan State University’s Small Town Design Initiative on a conceptual improvement plan for a variety of physical improvements to the City. Several of these improvements relate to the parks, pathway system, and riverfront. The plan remains a resource towards planning future projects.

FERC Municipal Dam Recreation and Land Use Plan

Because the City of St. Louis owns and operates the St. Louis Municipal Dam, it is required to complete a recreation and land use plan to satisfy the requirements of Article 412 of the City’s Federal Energy Regulatory Committee (FERC) license agreement. It includes review of all St. Louis parks that are located on the Pine River. The most recent plan was completed in 2007. This document includes planned upgrades for:

- Improve ADA accessibility at Leppien Park, Barnum River Park, Penny Park and Lions Park.
- General improvements at Barnum River Park.
- Canoe Portage around the dam at Mill Street.
- Signage improvements in all the parks, including directional signs, fish consumption warning signs and no swimming signs.



A view of the St. Louis Dam, near Barnum River Park.



ACTION PLAN

Following is a brief description of accomplishments over the past 5 years and a description of the projects that the Parks and Recreation Commission has determined are recreational priorities for the City over the next five year period. On a broad scale, the Commission has developed a City Trailway Plan and a Waterfront Plan. Beyond that, it has developed specific desired actions for each of its remaining parks. Conceptual development plans have been drawn for Leppien Park, the Velsicol Site and Barnum Park and justification is provided for each project. All of the plans mentioned above can be found at the end of this chapter. A list of potential funding sources has been included in Appendix B.

ACCOMPLISHMENTS

In the past five years, St. Louis has completed the following improvements to its park and recreation facilities. They were completed with the use of generous private donations from individuals and civic groups as well as grants from the Gratiot County Community Foundation and the W.T. Morris Foundation and City funds.

Leppien Park

Deck and wooden bridge walkway rebuilt; new play structure part one; new safety surface installed; second play structure and swing added; electric service added to pavilion; pet waste-station added

Barnum River Park

Fishing platform resurfaced

Lincoln Park

New playground equipment and site work; new half-court basketball court created; improved parking area; drainage improved

W.T. Morris Memorial Swimming Pool

Pool house completely renovated

Penny Park

New playground equipment installed; new flower bed installed

Clapp Park

Upgraded play surface; trees planted; pet waste-station added

NON-MOTORIZED TRAIL PLAN

The City of St. Louis developed a Non-motorized Trail Conceptual Plan as part of the update of this Recreation Plan. The purpose of the plan is to identify routes for future expansion of the pedestrian and trail system in the St. Louis community and adjacent communities. The expansion of this trail system into a regional non-motorized trail will provide non-motorized transportation and recreational opportunities throughout and beyond the community of St. Louis to a variety of destinations including neighborhoods, schools, commercial areas, civic uses, places of employment and parks and open space and nearby communities, particularly the City of Alma. The Trail Plan can be found at the end of this chapter.

Research of Existing Trailways

In the development of the Trail Plan, the entire St. Louis community was looked at in terms of what trails and sidewalks existed and nearby communities were researched for their existing and proposed trail systems.

The only existing non-motorized trails in St. Louis are within existing parks and sidewalks along the more populated streets. Existing trails are developed in both Lions and Leppien Parks, with planned trails in Barnum Park and the Velsicol Site. Existing sidewalks currently exist along Washington Street (M-46) and many of the other major City streets, primarily east of the Pine River, leading to the schools.

The closest community with an existing trail system is Alma (to the southwest) where the Fred Meijer Heartland Trail has been developed east-west through Alma. This trail system extends further west from Alma to Edmore and south of Edmore to Stanton, and then southwestward to Greenville. There is also an inter-regional non-motorized trail system proposed to connect to Alma from the north, through Mt. Pleasant and Clare, where it would



Map of Frederick Meijer Heartland Trail from Greenville to Alma.

connect to the Pere Marquette Rail Trail. The Pere Marquette Rail Trail is

developed from Midland through Clare, and further westward to Farwell, with proposed connections heading west from Farwell. The Pere Marquette system also connects with City of Midland trail system and the proposed links to the Great Lakes Bay Region Trail system which will connect Midland, Bay and Saginaw Counties.

Trail Plan Development

With the most developed trail at Lions Park, it is a natural starting point for future development to expand upon. The planned trail route through the City of St. Louis is proposed to follow the Pine River corridor north of and south of Lions Park, in Downtown St. Louis area. Following the river and proposed trail route to the southwest, the proposed route can be developed along the Pine River, crossing under US-127 to the Alma Trail. An alternate location for this connection is shown on the plan, following Cheesman Road west to Begole Road south into Alma. To the north the trail is proposed to follow the eastern bank of the Pine River where it will connect with Leppien Park at the intersection of the Pine River and Washington



Lions Park Trail.

(M-46) and the Velsicol site on the eastern bank of the river just north of M-46. The trail is proposed to cross the Pine River at Mill Street to connect with Penny Park, Barnum Park and Clapp Memorial Park. Existing sidewalks from this point already connect the proposed trail system to Hubble Field. The

proposed trail will also connect to the existing sidewalk system up through West Madison Road. The sidewalk system is proposed to extend further along West Madison Road to Hidden Oaks Golf Course where it will turn south. The proposed trail will meander through the golf course to West Monroe Road (Washington/M-46). The proposed trail will cross over M-46 and head south to connect with the proposed route along Cheesman Road. In addition to these routes, supporting sidewalk routes are proposed along Michigan Avenue from State Street to US-127 and along South Main Street (US-127 Business Route) from State Street to East Crawford.

Development Priorities

Extending the trail within the City and beyond is the City's top priority, with the connection from Lions Park to Alma as the primary focus. Once connected to the trail in Alma, the City of St. Louis will be regionally connected to existing and planned routes of non-motorized travel throughout the State of Michigan. The second priority for development of the St. Louis trail is from Lions Park northward, along the Pine River to City Hall, the pool and Barnum Park. The final priority for connection would be through the northwest section of St. Louis, along West Madison Road to the golf course, south through the golf course and connecting to Cheesman Road.



Meijer-Heartland Trail in Alma.

Implementation

Planning is merely one step toward creating a comprehensive system of trails connecting a community within and beyond its borders. Implementing this plan will be a long and sometimes tedious process that will require cooperation among groups, tenacity in working towards goals and endurance in dealing with long time tables. There are many implementation strategies that can help turn much of this plan into a reality. The main strategies include acquisition of property, seeking funding for development and finally development of the trail.

Acquisition of Property

Many segments of the proposed trail will require acquisition of property. This would be the first step in the process. The property can be a donation, an easement, lease, license, fee simple purchase, or other form of use agreement. Depending on the price of the acquisition, the City may choose whether or not to pursue grant funding.

Seek Funding

The City of St. Louis will pursue grant funding to develop these non-motorized connections. Grant funds may also be sought to acquire property, depending on the cost of acquisition. Trail grants for acquisition and development can be sought from federal, state and local sources. For most grants, local match money is required and projects must be listed in the recreation plan.

Development of Trail

Three things must be in place to develop the trail: LAND must be acquired or secured; FUNDING must be in place; and PEOPLE must be on-board to support the project

Maintenance

Regular maintenance of the trail system, once developed, will be very important to ensure they function safely and efficiently for users. Considerations will need to be taken into account for both short-term and long-term maintenance. Short-term maintenance includes daily, weekly, or regular maintenance of the trail such as mowing grass, trimming tree branches, sweeping, snow removal or small repairs. With the trail along the river, there may also be some sediment removal or cleanup after a high water event. Long term maintenance are usually capital improvement items, such as repaving, re-decking a boardwalk or other larger project which a typical maintenance budget cannot handle.

WATERFRONT PLAN

The City of St. Louis wishes to capitalize on its Pine River waterfront area and has developed a waterfront plan that relates primarily to recreational use of the river. The purpose for producing the master plan for the Waterfront Planning Area is to:

- Maximize the success and impact of activities already underway.
- Connect key areas within the Waterfront Planning Area that are not adequately connected.
- Clean up and develop areas that have been underutilized.
- Maximize use and availability of existing parks and their opportunities for public access to the River.
- Overcome the image that the Pine River in St. Louis is not environmentally safe.



A view of the St. Louis Water Tower from the Pine River.

By orienting waterfront revitalization around public spaces, new development will enhance the quality of existing destinations and result in a whole that is greater than the sum of its parts.

The Waterfront Plan can be found at the end of this chapter and includes many of the City’s park properties along the Pine River. Plans for improvements to some of these sites, as they relate to the waterfront, are included below. The Waterfront Development Plan can be found at the end of this chapter.

Trailways Along the Waterfront

The proposed trail development will run along the Pine River corridor, primarily on the eastern bank. A more detailed description for the Trailways development can be found above in the description of the Trailways Plan with a Conceptual Development Plan at the end of this chapter.

Lions Park

Bank stabilization is included along the waterfront at Lions Park to protect the park from scouring by the bend in the Pine River. The bank stabilization may include stone rip-rap, plantings, or a combination of the two.

Velsicol Site

The Velsicol site is undergoing environmental remediation and cleanup to be used for recreational purposes. The proposed plan includes trailway along the riverbank and fishing platforms along the waterfront. A complete description of the proposed improvements of the Velsicol Site can be found starting on the next page, with a Conceptual Plan at the end of this chapter.



An aerial view of the Velsicol site.

Leppien Park

Leppien Park is along the west bank of the Pine River at Washington / M-46. It is currently well developed after 2016 shore stabilization, new boat launch and large pavilion, and playscape replacement in 2019. A complete description of the proposed improvements to the site can be found starting on the next page, with a Conceptual Plan at the end of this chapter.

Mill Street / City Hall / W.T.Morris Pool / Barnum Park

The waterfront plan introduces a new pedestrian bridge behind City Hall, near the W. T. Morris Pool to connect with Barnum Park, across the Pine River. This would provide river access and connectivity to recreational land in this area. River access could be in the form of a boat launch, floating dock or other means of providing opportunities for boating and fishing.

Property Acquisition along the Waterfront

The City of St. Louis acquired waterfront property directly south of Lions Park and is interested in property east of the Velsicol site. The property south of Lions Park, once developed, would contain a trailhead area for the proposed trail. The other properties would provide additional greenspace in the community to buffer the Pine River from heavier uses.



A view of the Pine River in St. Louis.

Other Types of Waterfront Improvements

There are other elements to add to the recreational quality of the Pine River in St. Louis. Improvements might include:

- Interpretive signage depicting the natural features of the site, the history of the area or other educational subject.
- Picnic areas or benches for recreational enjoyment.
- Viewing platforms for observing wildlife.
- Bank stabilization along the river corridor which could help to improve the water quality, protect the riverbank and provide access to the river.

Implementation of Waterfront Improvements

There are a number of projects listed to improve the waterfront of the Pine River. Each project will require funding that may be obtained through grants. A complete list of potential grants can be found in Appendix B.

LEPPIEN PARK

This 3.7 acre park is located on the City’s west side on the southwest corner of the intersection of M-46 and the Pine River. The park provides 350 feet of river access, a boat launch, a barrier free fishing platform and serves the City’s largest subdivision. The park has picnic and barbeque facilities as well as a children’s play area with equipment. Walkers and joggers enjoy the trailways along the river as well. New and updated playground equipment was added in 2018 and 2019 with ADA accessible surfacing.



Leppien Park Pavilion.

A conceptual improvement plan for Leppien Park was developed as part of the Recreation Master Plan process. The proposed improvements include:

Bank Stabilization

This was part of the 2016 grant project including enhanced vegetation and other bank stabilization control measures along the Pine River shoreline within Leppien Park. This deters Geese and other waterfowl from coming on shore at the park to ensure that the park remains nearly free of waterfowl feces. Bank stabilization and shoreline restoration work addressed the erosion problem.

Park Entry Sign

Because of Leppien Park’s location along M-46, it makes it one of the City’s most visible parks along the scenic Pine River. However, there is no signage along M-46 as a park identifier. The Parks and Recreation Commission would like to purchase a sign to place along M-46 within the near future. With Leppien Park being one of the City’s premier parks, it is felt that it should be promoted as such. The Parks and Recreation Commission would also like to see a yellow flashing warning light to notify traffic of possible pedestrian foot traffic going to and coming from Leppien Park.

Pavilion / Parking

As part of the 2016 DNR project, a large pavilion was built to meet the needs of park users. However, additional parking is still needed closer to this pavilion.

Boat Launch Improvements

The existing boat launch was replaced by a new launch as part of the 2016 DNR project, to improve accessibility and service for launch users

VELSICOL REDEVELOPMENT PLAN

The City intends to develop this property for recreational uses. This site is located along the Pine River and is currently undergoing an environmental remediation by the US EPA. A Reuse Planning Report for the Velsicol Chemical Corporation Superfund Site was completed for the City of St. Louis in June of 2004. Based upon this document, the City has developed a conceptual plan for development at the site. It is included at the end of this chapter. The proposed improvements are described below:



An aerial view of the Velsicol site.

Trailway Extension & Lighting

The trail extension and lighting at this location will be a part of the larger trailway plan to connect the City of St. Louis with the City of Alma as well

as providing area residents and regional users the opportunity to enjoy a scenic, multi-use recreational trail way within the center of the state. Lighting the trail will extend the hours the trail can be used and will provide a sense of safety on the trail in the evening hours.

The proposed trailways through this site will run along the east and west sides of the property, looping together, with some intermediate crossings through the park. The trailways will connect all of the proposed elements of the park for ADA access. The trailways will also connect to existing sidewalks on North and West Center Streets on the west side of the Velsicol site and to M-46 on the south side. A more detailed description of the Trailway Plan can be found on pages 25 - 28.

Other Recreation-Based Improvements

Along with the proposed trailways, the park plan also includes many other types of recreational improvements to the site. These include a boat launch, fishing piers, fitness stations, sports fields, basketball courts, an educational building, an amphitheater, parking, fencing and landscaping.

Implementation of the Velsicol Site Development

There are a number of projects listed. Each project will require funding that can be obtained through potential grants. The cleanup of the Velsicol site remains in process, likely requiring that the current redevelopment plan be revised.

A complete list of potential grants can be found in Appendix B. For further information on this property, please reference the *Recognizing the Past, Looking to the Future: Reuse Planning Report for the Velsicol Chemical Corporation Superfund Site*, completed for the City of St. Louis in June of 2004.

BARNUM RIVER PARK

Dedicated in 2002, this half-acre park is located on Main Street, two blocks north of M-46 along the Pine River near the St. Louis Electric Department Dam. This park is St. Louis' most active site for fishing. Easy fishing access is provided by a wooden platform constructed through the help of a DNR Fisheries Grant. Parking and benches are available on the north side of the park. A conceptual plan was completed in 2011 and can be found at the end of this chapter. The following is a list of proposed improvements for Barnum River Park:

River Walk Extension and Lighting

The river walk extension at this location will be a part of the larger river walk project to connect the City of St. Louis with the City of Alma as well as providing area residents and regional users the opportunity to enjoy a scenic, multi-use recreational trail way within the center of the state.

Shoreline Restoration

The City will be implementing measures to stabilize the shoreline at this location due to erosion from the fast current generated by the St. Louis Electrical Dam. A significant portion of this work was accomplished in 2013. Additional shoreline protection and improvements to the Main Street bridge are in the design stage.



Fishing access at Barnum River Park.

Improve Accessible Parking

The City was able to improve parking at Barnum Park in 2013 as part of the North Main Street paving and bank stabilization project. They paved the gravel lot that was muddy during the spring thaw and fall rains and lined the new pavement. This improved ADA compliance as well.

Increase Vegetation or Other Control Measures Along the Pine River Shoreline

This is a project that in theory will deter Geese and other waterfowl from coming on shore at the park to ensure that the park remains free of waterfowl feces.

Canoe Portage

This area in the future will afford canoe portage for those using the Pine River for canoeing.

CLAPP PARK

This large, wooded lot the size of a full City block provides open space in the City's center. A picnic shelter/pavilion (which received extensive renovation in 2003 to match the Victorian theme of the City), picnic tables and grills provide users with a central location for picnics and other non-physical activities. A replica of a historic gazebo for music performances was constructed in 1999 and Victorian lighting was added throughout the park in 2001. Parking is available on Franklin and Clinton Streets which border the park on the west and east sides. The park is bordered on the south by M-46 (Washington Avenue) and on the north by Saginaw Street. The park is in a residential area, only one block away from the Central Business District and is across the street from St. Louis High School. The following is a list of proposed improvements:



Shelter Improvements

With the former well house no longer used, the City hopes to be able to renovate the pavilion/shelter facility to become a concession stand to use during community events.



The gazebo/stage at Clapp Park.

Improve Gazebo/Stage

The Parks Commission has identified this as a project that would be a restoration and addition to the existing gazebo within the park. Currently, this facility is used for several community functions such as weddings, school pictures and music recitals and concerts within the park. The Commission has identified the fact that the current facility is not conducive to concerts; therefore, would like to add on to the existing structure providing a better stage area for musicians to perform.

Add New Playground Equipment

Playground equipment was significantly upgraded in 2010 to include a dome climber, swings and a merry-go-round to make it more adequate for the number of users of this park. This equipment is intended for use for children ages 4-9.

Add New Park Signage, Historical Marker, Trees

In an effort to better promote Clapp Park as well as the geographical significance of St. Louis, the Parks Commission is recommending new banner signs on each light pole along Franklin and Clinton Streets reading CLAPP PARK with the City logo. Further, there is a geographical marker located within Clapp Park that signifies the geographical center of the Michigan's Lower Peninsula. The City would like to purchase a new historical plaque to place at this marker to clearly show the marker's intent and significance. This has been identified as a priority project for this park. In addition, plans are to design and install a decorative wall and planters to welcome people to St. Louis as they enter the downtown area from the east or west. Finally, additional tree plantings and replacements are necessary to maintain the atmosphere of this historic area.

PENNY PARK

This park is situated on the north side of the Pine River. Located on Prospect Street, the 1.2 acre park provides open space for the area as well as a scenic overlook of the river. The park also has a children's play structure, picnic tables, pavilion and benches. Parking is available along the north side of the park on Prospect Street and the park is in a residential area. The City recently installed additional safety surface material to meet MRPA and ADA standards. The following is a list of proposed improvements for Penny Park:



Penny Park.

Increase Vegetation or Other Erosion Control Measures along the Pine River

This is a project that, in theory, will deter Geese and other waterfowl from coming on shore at the park to ensure that the park remains free of waterfowl feces.

LIONS PARK

This park, located between the Pine River and Michigan Avenue, provides recreational resources to the City's south side. The park includes three picnic shelters, picnic tables and grills. Limited parking is available at the park. The three-acre park includes over 1,500 linear feet of river frontage and is surrounded by residential areas. The following is a list of proposed improvements for Lions Park:



Lions Park.

Acquire Land near Intersection of Hazel Street and Michigan Avenue

The City would like to acquire adjacent property to the north end of Lions Park for the purposes of developing an improved, ADA compliant parking area to increase parking and accessibility at this park. Currently the park is extensively used by non-motorized foot traffic because of its scenic river walk. The City would like to install Victorian lighting and benches along the trail throughout Lions Park as well as add more trees.

Connection of River Walk North and South of Lions Park

One of the assets of this park is that there is an extensively used river walk for non-motorized traffic. The Parks and Recreation Commission would like to see this walk extended north and south of the property to connect with other existing parks, neighborhoods and the Downtown area. This work would be a small part of the overall plan to extend a river walk throughout the City and eventually connect to the south with the City of Alma and the Frederic Meijer Heartland Trail.

Stabilization of Park's Shorelines

As part of the river walk and other various park improvements, the City has identified that the shoreline of the Pine River along Lions Park will need measures to prevent erosion damage.

Increase Vegetation or Other Control Measures along the Pine River Shoreline

This is a project that in theory will deter geese and other waterfowl from coming on shore at the park to ensure that the park remains free of waterfowl feces.

Benches and Waste Receptacles

The Parks and Recreation Commission would like to add new benches and waste receptacles along the trailway at Lions Park as well as near play areas and parking areas. Another long term feature of this area should be to add period lighting and benches along the trailway.

LINCOLN PARK

This 1.1 acre neighborhood park serves the needs of residents in the southeast quadrant of the City. The park has play structures, benches and picnic facilities and provides open space for area residents. A new half-court basketball court was created in 2021 with lined cement play surface and a high-quality goal. The park is located on Lincoln Street two blocks south of M-46. Limited on-site parking is available as well as on-street. The following is a list of proposed improvements for Lincoln Park:



Lincoln Park.

Improve Parking

Currently parking for this park consists exclusively of on-street parking along Lincoln Street and other surrounding streets. The Parks and Recreation Commission would like to evaluate several parking alternatives to determine which parking model would be best suited to improving the parking at this facility. In 2017 some off-street parking was added but the area is not paved.

W.T. MORRIS MEMORIAL SWIMMING POOL

This public swimming pool serves the City and school district with recreational opportunities in the summer months. The pool includes a bath house with showers, restrooms and locker facilities. The outdoor pool is located at the north end of the Central Business District on Mill Street. In 2005, with the help of a Land and Water Conservation Fund Grant, the City replaced the existing 50-year old pool with a heated pool that is handicapped



W.T. Morris Memorial Pool.

accessible, new deck and improvements to the bath house. The following is a list of proposed improvements for W.T. Morris Memorial Pool:

Improve Existing Parking and Address Need for Additional Parking

Currently there is on-street parking along Mill Street in front of this site, however due to the usage of this facility during the summer months, additional parking is necessary. The City is looking at a couple of options for a surface parking lot that would either construct a new lot to the north of the pool, and the second option would be to improve a surface lot to the south of the pool on Mill Street.

Addition of Concrete Patio or Deck behind the Pool

This project has been identified in the STDI study. The intent of this project would be to provide a seating area near the pool which could be used to sunbathe, parents could read or watch their children, and to provide a shaded picnic area for those who are ready to take a break from the sun without leaving the pool facility.

Canoe Portage/Shoreline Protection/Pedestrian Bridge

The City wishes to construct improvements in the area of the pool including a pedestrian bridge to connect to Barnum Park, a canoe/kayak launch and additional shoreline protection measures. This would include a path for the portage route from the Mill Pond to below the dam. This has been identified as a priority item by the Parks & Recreation Commission and the City, as it would fulfill a FERC requirement in the City of St. Louis Municipal Dam Recreation and Land Use Plan.

HUBBLE FIELD / CARRIE KNAUSE ELEMENTARY

Hubble Field is located at the site of Carrie Knause Elementary School in the northern third of the City and is intended for use as a softball diamond. Two Little League diamonds and one T-Ball diamond were recently constructed at Hubble Field/Carrie Knause Elementary School Complex. The following is a list of proposed improvements for Hubble Field/Carrie Knause Elementary School complex:

General Park Improvements

The Parks and Recreation Commission have identified several maintenance projects that they would like to complete at this park over the next five (5) years to improve upon the parks appearance and overall usability. These projects are as follows:

- Add new lighting to the park.
- Add new bleachers for spectators.
- Construct a fence north along Union Street to prevent balls from going into the street.
- Add additional parking to prevent people from parking on the lawn.
- Add ADA compliant restrooms to the facility.

This park currently receives a fair amount of usage since it is adjacent to an elementary school; however these are all improvements that the Parks and Recreation Commission feel will enhance the overall attractiveness of this park to youth and adult leagues as well as the general public.

MICHIGAN AVENUE BOAT LAUNCH

The City currently owns a vacant piece of property along the Pine River on South Michigan Avenue that is fenced and paved. The Parks and Recreation Commission would like to investigate the feasibility of converting this lot into a public boat launch to provide an additional access point to the river within the City.

OTHER PROJECTS

The City may desire to develop other facilities in St. Louis where a need was expressed in the community input. A description of those needs is as follows:

Development of Soccer Fields and Programs

Both the Parks and Recreation Commission and the St. Louis Area Schools identified the need for youth soccer programs within the City. It is the intent within the next five years to determine an appropriate location for soccer development and move forward with programming. Possibilities are next to T.S. Nurnberger Middle School, near Hubble Field and on property on Cheesman Road.

Farmers Market/Performance Pavilion

The St. Louis Community lacks a large pavilion as a home for activities such as the Farmers Market, entertainment/performances and other community events. The City plans to identify the best site for this and move forward with the construction of this type of facility.

Baseball Field

The high school baseball field, because of its proximity to the Pine River, is subject to flooding in the spring. The City and schools would like to determine a site for and construct an additional full size baseball field because of this situation. This field could also be used for summer leagues and would not replace the existing field, which is currently the only one available in St. Louis.

Tennis, Pickleball and Basketball Courts

The Parks & Recreation Commission intends to develop more sites for tennis, pickleball and basketball. All are popular activities, yet there is a lack of facilities for them. It is possible that a single site could accommodate two or three of these, reducing the cost of creating these facilities.

Outdoor Fitness Facilities/Stations

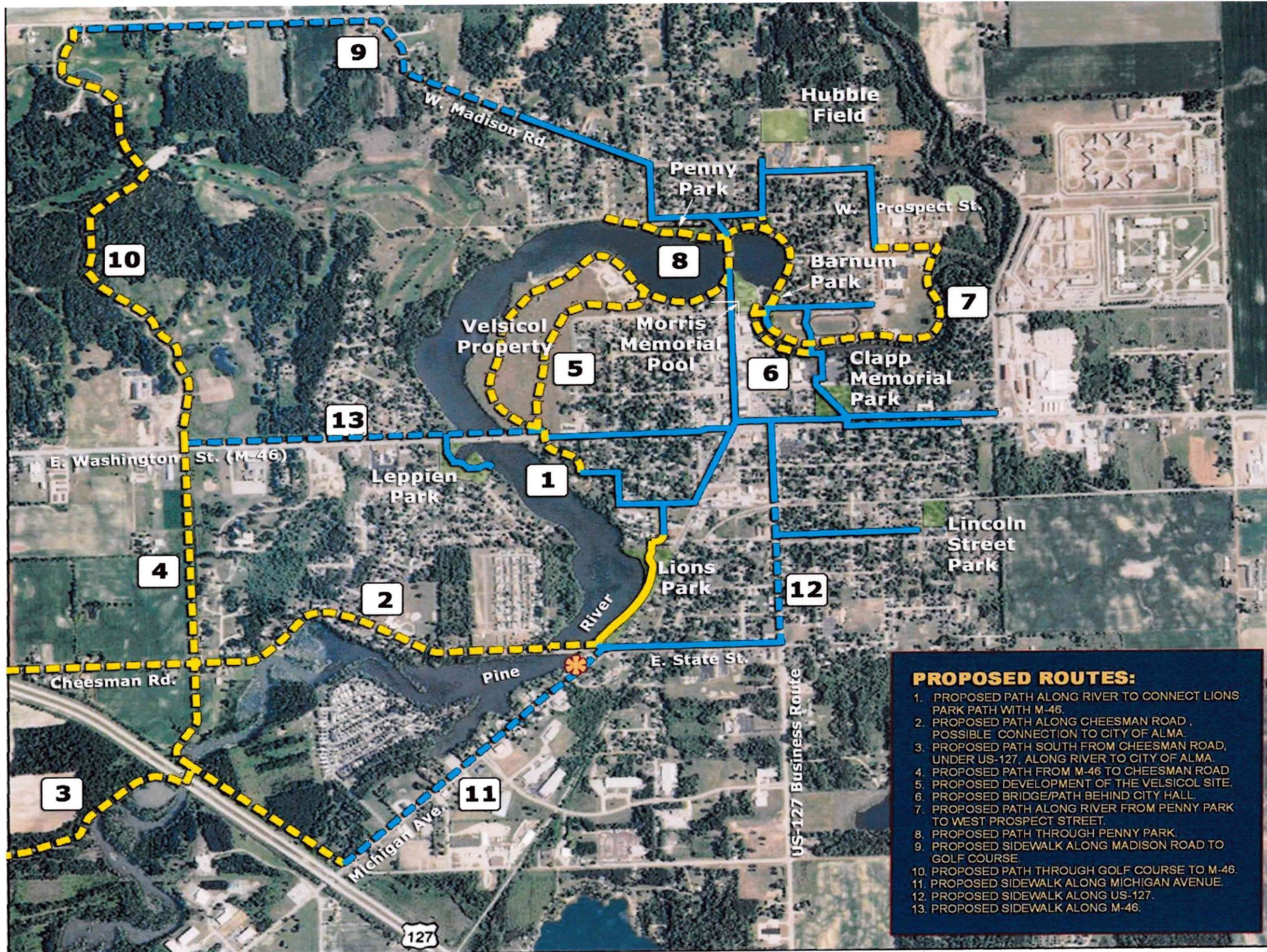
The Parks & Recreation Commission will also explore the possibility of creating an outdoor fitness facility or stations located either on trails or in park areas.

Park Signage

The City intends to standardize signage throughout all of the parks over the next five years.

ST. LOUIS AREA SCHOOL DISTRICT

The City of St. Louis and the St. Louis Area Schools have agreed to mutually assist each other in providing the residents of the City and the school district with the best recreational opportunities available. This partnership has worked very well in the past, and both parties have expressed an interest in strengthening that bond so it can be even better in the future. In addition, the St. Louis Public Schools in 2021 reinstated a Community Education program that includes many recreational and sports offerings for students and adults.



**NON-MOTORIZED TRAIL
CONCEPT PLAN**

**CITY OF
ST. LOUIS**

www.stlouismi.com

108 West Saginaw St.
St. Louis, MI 48880
(989) 681-2137



NOT TO SCALE

LEGEND:

- EXISTING PATH
- PROPOSED PATH
- EXISTING SIDEWALK
- PROPOSED SIDEWALK
- PROPOSED TRAILHEAD

PROPOSED ROUTES:

1. PROPOSED PATH ALONG RIVER TO CONNECT LIONS PARK PATH WITH M-46.
2. PROPOSED PATH ALONG CHEESMAN ROAD, POSSIBLE CONNECTION TO CITY OF ALMA.
3. PROPOSED PATH SOUTH FROM CHEESMAN ROAD, UNDER US-127, ALONG RIVER TO CITY OF ALMA.
4. PROPOSED PATH FROM M-46 TO CHEESMAN ROAD
5. PROPOSED DEVELOPMENT OF THE VELSICOL SITE.
6. PROPOSED BRIDGE/PATH BEHIND CITY HALL.
7. PROPOSED PATH ALONG RIVER FROM PENNY PARK TO WEST PROSPECT STREET.
8. PROPOSED PATH THROUGH PENNY PARK.
9. PROPOSED SIDEWALK ALONG MADISON ROAD TO GOLF COURSE.
10. PROPOSED PATH THROUGH GOLF COURSE TO M-46.
11. PROPOSED SIDEWALK ALONG MICHIGAN AVENUE.
12. PROPOSED SIDEWALK ALONG US-127.
13. PROPOSED SIDEWALK ALONG M-46.



www.spicergroup.com

230 S. Washington Ave.
Saginaw, MI 48607
(989) 754-4717

January, 2023



City of St. Louis Five Year Parks & Recreation
Waterfront Plan



www.stlouismi.com



230 S. Washington Ave.
 Saginaw, Michigan, 48607
 (989) 754-4717
 www.spicergroup.com

Pathway Plan Legend

- Existing Sidewalk
- Proposed Sidewalk
- Existing Pathway
- Proposed Pathway

Google earth

January, 2023

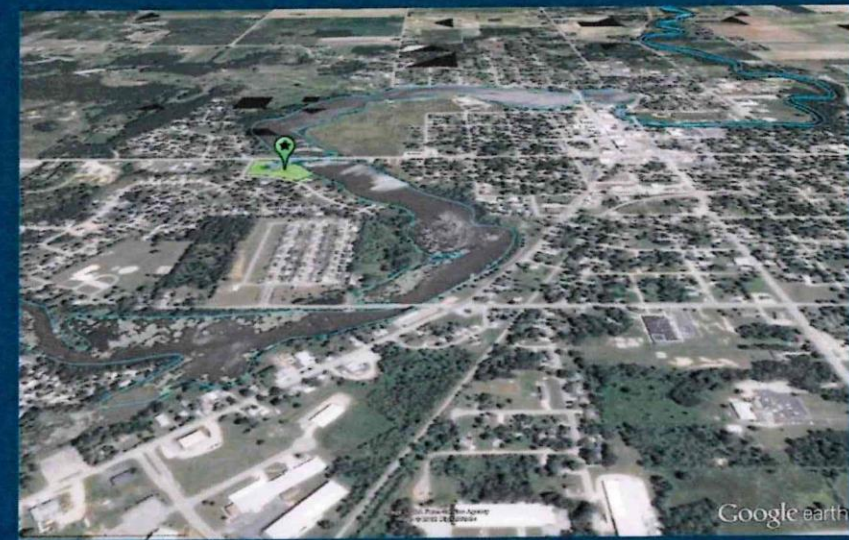
Image USDA Farm Service Agency



Leppien Park

City of St. Louis Five Year Parks & Recreation Plan

Located on the City's west side on the southwest corner of the intersection of M-46 and the Pine River, Leppien Park is 3.7 acres in size and provides 350 feet of river access. In addition, the park has a boat launch, two barrier-free fishing platforms, and serves the City's largest subdivision. The park has picnic and barbeque facilities, as well as a children's play area with equipment. Walkers and joggers enjoy the pathways along the river as well. Updated playground equipment was added in 2011.



Location Map: Waterfront view of Leppien Park



January, 2023



Velsicol Site

City of St. Louis Five Year Parks & Recreation Plan

In 2004, the EPA completed a reuse planning report for the Velsicol Chemical Corporation superfund site. The report presented a number of guidelines that highlighted key reuse considerations and opportunities, a number of which were recreation improvements. The plan presented here incorporates those concepts, but as part of the Parks & Recreation Plan for the City of St. Louis, it furthers those ideas toward recreational amenities that are community-oriented and potentially eligible for MDNR grant programs.



www.stlouislam.com



spicer
group
230 S. Washington Ave.
Saginaw, Michigan, 48607
(889) 764-4717
www.spicergroup.com

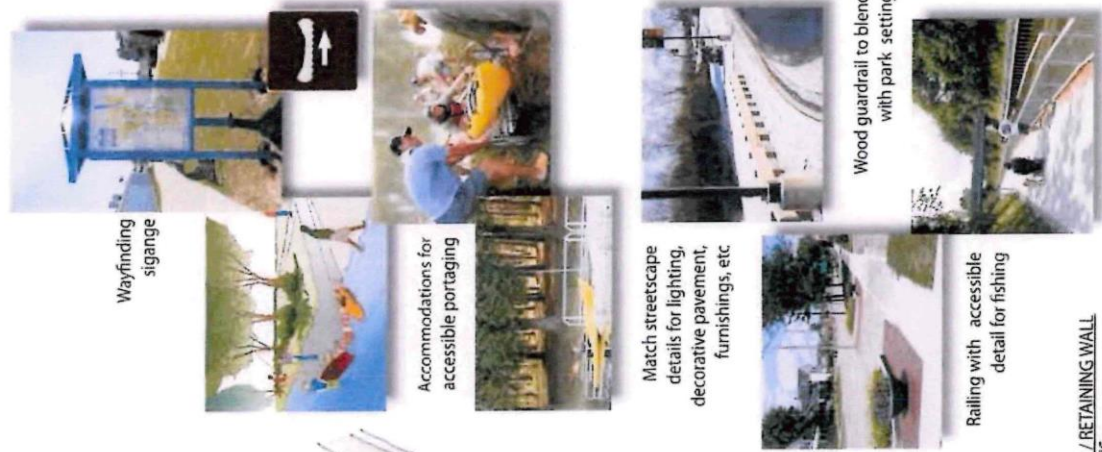
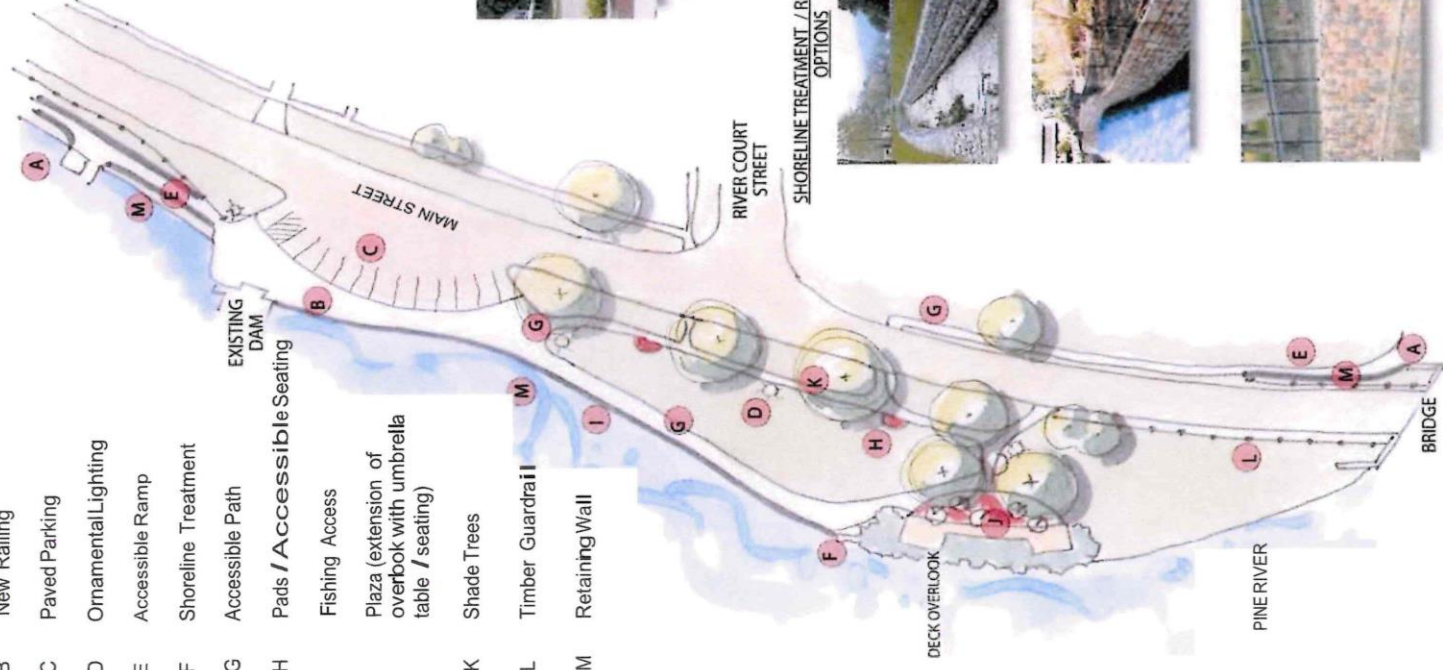
January, 2023

Barnum River Park

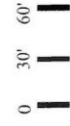
Concept Plan

Project Summary:

- A Accessible Pad / Portage and Future Riverwalk Extension
- B New Railing
- C Paved Parking
- D Ornamental Lighting
- E Accessible Ramp
- F Shoreline Treatment
- G Accessible Path
- H Pads / Accessible Seating
- I Fishing Access
- J Plaza (extension of overlook with umbrella table / seating)
- K Shade Trees
- L Timber Guardrail
- M Retaining Wall



SHORELINE TREATMENT / RETAINING WALL OPTIONS



City of St. Louis, MI

January, 2023

PLANNING PROCESS

In its continuing effort to provide quality recreational opportunities for its citizens, the City of St. Louis has developed this Parks & Recreation Master Plan as a tool to guide the development of community parks and recreation over the next five years. This plan is the latest effort by the local governmental officials in the City of St. Louis to establish recreational goals and objectives for the community. The plan will also provide the City with eligibility for grants from the Michigan Department of Natural Resources (DNR) to assist the community in reaching its recreational goals.

The City of St. Louis worked with their Parks and Recreation Commission and the St. Louis Public Schools to assist them with completion of the Parks & Recreation Master Plan, as well as concept plans for their Pathway, Waterfront, the Velsicol site, Leppien Park and Barnum Park.

Data was collected about the City including maps, demographics, park information and an inventory of existing facilities. This data was collected from a number of resources, including the past recreation plan and other documents such as other relevant planning documents, various websites, field observations and conversations with City officials.

COMMUNITY INPUT

Community input was collected via an online survey conducted in the spring of 2022. Based upon the existing information and the community input, the City of St. Louis developed goals and objectives for parks and recreation. Then, action plan items were written that would work toward accomplishing the goals and objectives.

The Parks & Recreation Master Plan document was completed, and it was made available for review at the City of St. Louis for at least 30 days beginning on December 16, 2022. This reviewing opportunity was advertised in the local newspaper, The Morning Sun. The final opportunity for community input occurred at the advertised public meeting held prior to the adoption of the plan. This meeting was on January 17, 2023 at the City Council meeting held at the City Hall Council Chambers at 6:00 PM.

PLAN ADOPTION

On January 9, 2023, the City of St. Louis Parks and Recreation Commission passed a resolution adopting the recreation plan and recommended approval to the City Council. On January 17, 2023, the City of St. Louis City Council passed a resolution adopting the recreation plan and on January 16, 2023 the St. Louis Board of Education passed a resolution adopting the recreation plan. Copies of the advertisements and resolutions are included in Appendix D.



APPENDIX A

Public Input Documentation



Downtown St. Louis Newsletter

Good News from the "Middle of the Mitten"

January 25, 2022

PARKS & RECREATION PLAN TO BE UPDATED



The St. Louis 5-year Parks & Recreation Plan will be reviewed and updated this year!

The City will coordinate this along with the St. Louis Public Schools and the public will be offered the opportunity to give their input and ideas too through an online survey.

We're proud of the improvements we continue to make to the park system here in St. Louis and are determined to keep that going strong.

Stay tuned for more information this winter.



20+

POSTS

Filters

Manage Posts

List view

Grid view



City Hall St. Louis, Michigan
9m · 🌐



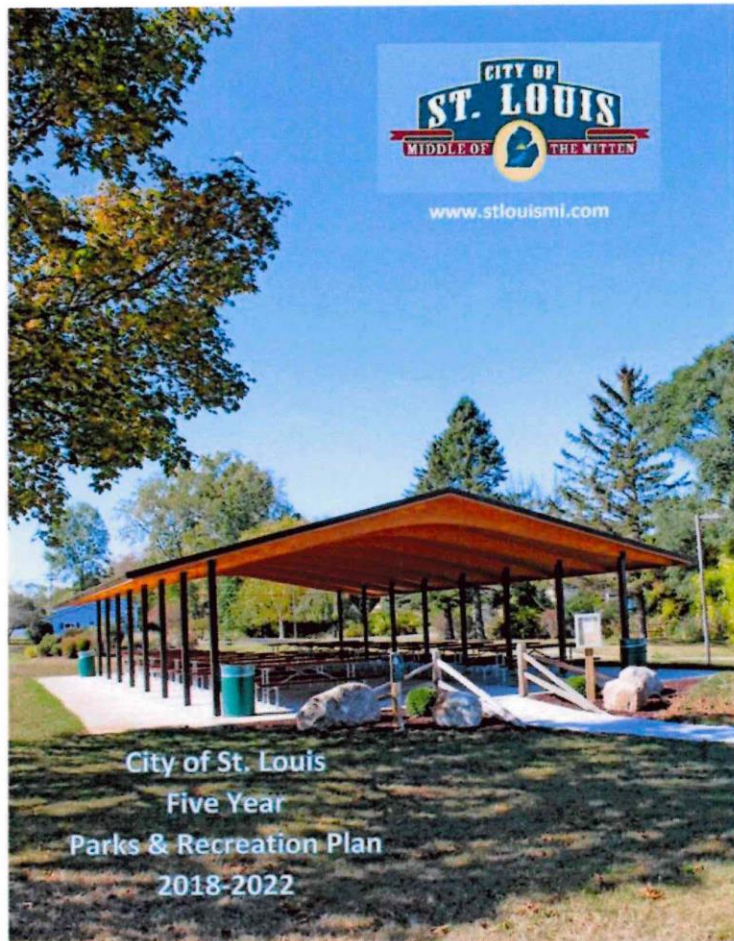
ST. LOUIS PARKS & RECREATION SURVEY –

As part of our revision of the City's 5-year Parks & Recreation Plan revision, we're asking St. Louis area residents to please fill out this short survey.

It should only take you a few minutes, so please fill this out and give us your input if you are familiar with our parks. Here is the link:

<https://docs.google.com/.../1FAIpQLScOxdLizow9Zh.../viewform>

This will be available through MAY 31 but please consider doing it soon. Thanks everyone!



See Insights

Boost post



1 reaction

ST. LOUIS

City seeks public input on parks plan

Survey available on city's website

By Greg Nelson
gnelson@medianewsgroup.com

The city of St. Louis is seeking public input on what upgrades they would like to see in local recreational facilities.

City officials are in the process of upgrading its five-year parks and recreation plan, which is required to be eligible to receive Michigan Department of Natural Resources-administered grants.

Area residents can provide their opinions by participating in a 17-question online survey that can be

accessed on the city's website.

There they can evaluate the city's current parks and other recreational facilities, their appearance, what amenities they would like to see added, their ideas for the potential redevelopment of the former Velsicol Chemical Co. plant site, and the importance they place on the preservation of the Pine River, natural areas, and adding more hiking and non-motorized trails and pathways in the community, among others.

The city has six parks, Clapp Memorial Park, Penny Park, Lions Park, Lincoln Street Park, Barnum River Park and Lep-

PLAN » PAGE 2



COURTESY PHOTO

New playground equipment at Penny Park is just one of the many improvements made to St. Louis parks since the city's five-year parks and recreation plan was last updated in 2018. Residents now have an opportunity to give their input on what other upgrades they would like to see in the revised plan by taking part in a survey offered on the city's website until May 31.

5/14/22

Plan

FROM PAGE 1

pen Park, as well as the W.T. Morris Memorial Swimming Pool and Hubble Field. It also has one undeveloped parcel.

Those total about 17 acres. In addition, St. Louis Public Schools has 43 acres that includes playgrounds, nature areas, ball fields and

other athletic facilities that are available to the public.

Some of the choices residents are being asked if they would like to see added are a splash pad, dog park, disc golf course, bandshell, fishing platforms and picnic pavilions, among several others.

The survey also asks the primary reasons people visit the parks.

The redevelopment of the former 52-acre Velsicol site

is a much more long term goal because cleanup of the contaminated property is still ongoing.

But city officials still want to know what type of amenities citizens would like to see there if and when it's suitable to become a park such as an amphitheater, fitness stations, multi-use sports fields, boat launch, fishing platforms, educational and historical exhibits, and walking paths.

The city council, Board Of Education, school and city administrators and members of the city's parks and recreation commission, in addition to the public, will all have input into the revised five-year plan.

The online survey will be available for residents to fill out until Tuesday, May 31.

The last time the plan was updated in 2018, about 220 people participated in the survey.

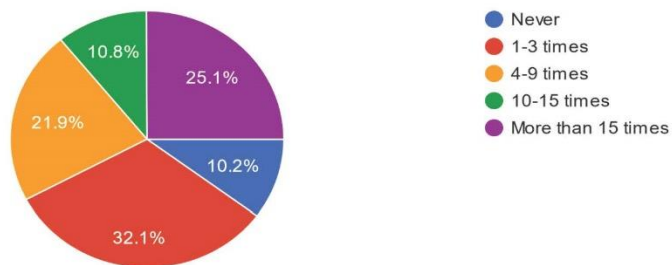
St. Louis Parks and Recreation 5-Year Plan Survey Results

315 Responses
Ended 5/31/2022

1.

How many times did you use a St. Louis park in the past year?

315 responses



2.



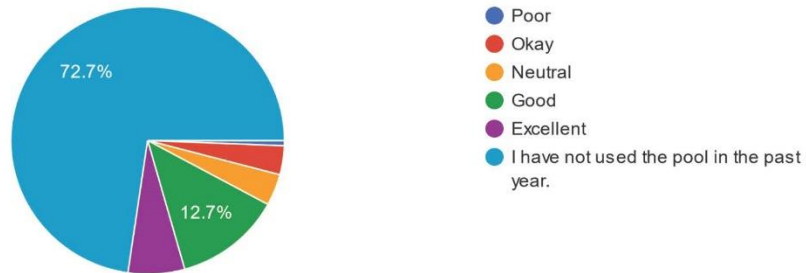
Other responses:

- Hanging out with friends: 34
- Children playing: 27
- Class/school use: 4
- Take pictures: 2
- Nothing/do not use: 8
- Family events (birthday, wedding): 4
- Dog walking: 3
- Bored: 1

3.

If you have used the pool, please evaluate the quality and friendliness of pool staff.

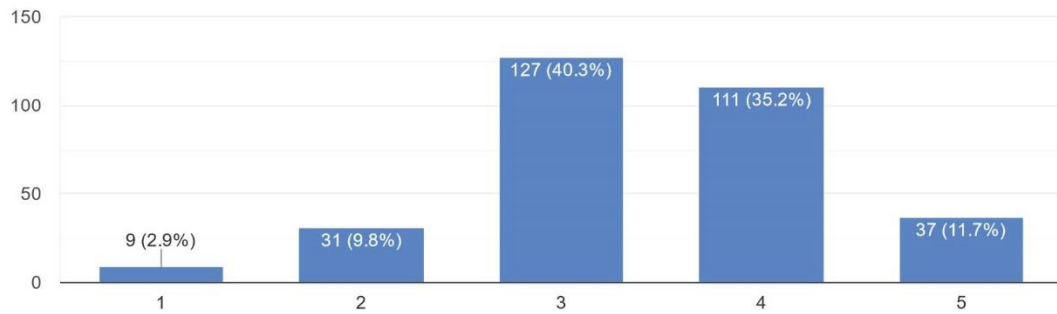
315 responses



4.

Please evaluate the variety of facilities/amenities of parks and recreation facilities in St. Louis.

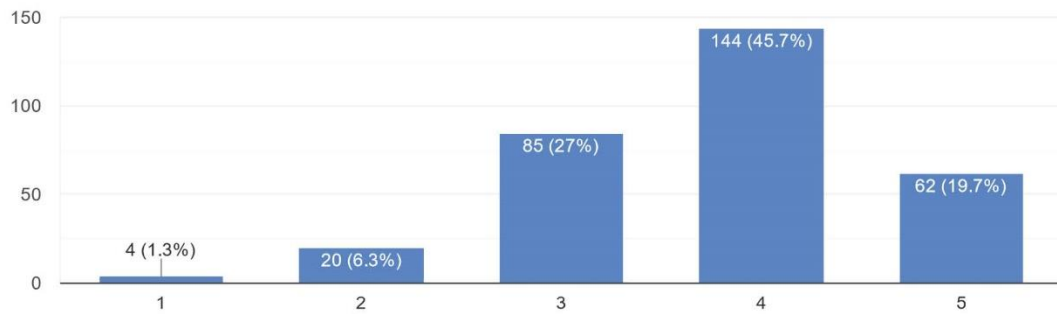
315 responses



5.

Please evaluate the maintenance and appearance of parks and recreation facilities in St. Louis.

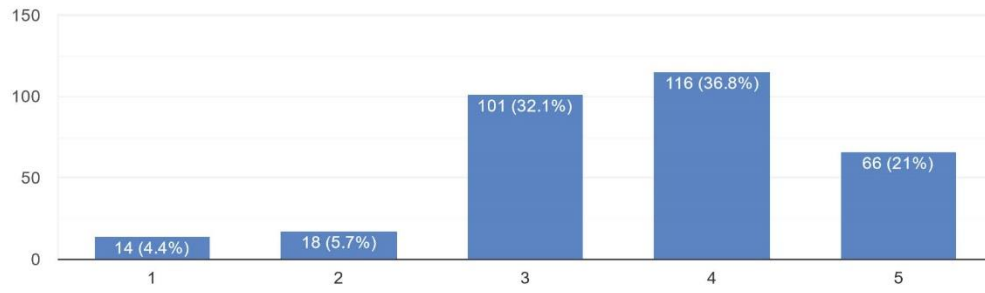
315 responses



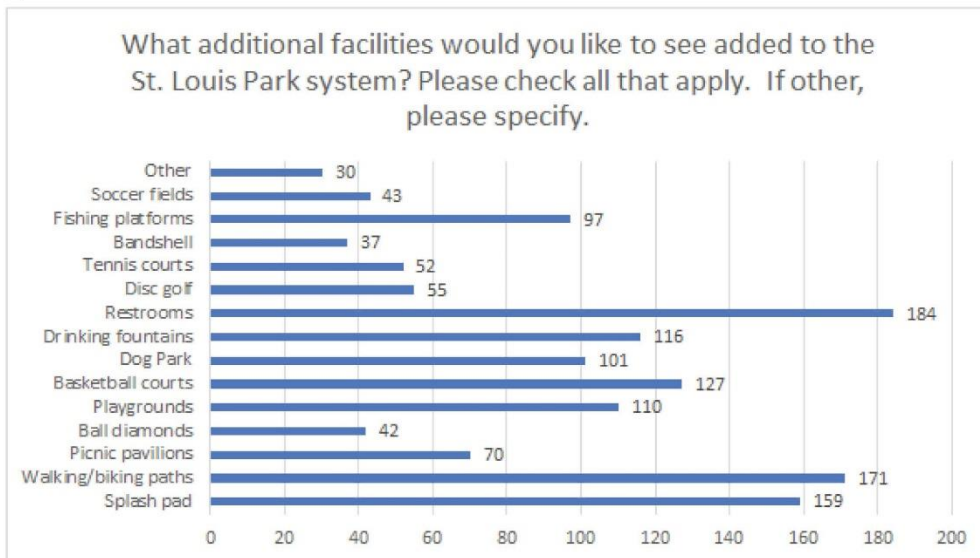
6.

Please evaluate the safety and security of parks and recreation facilities in St. Louis.

315 responses



7.

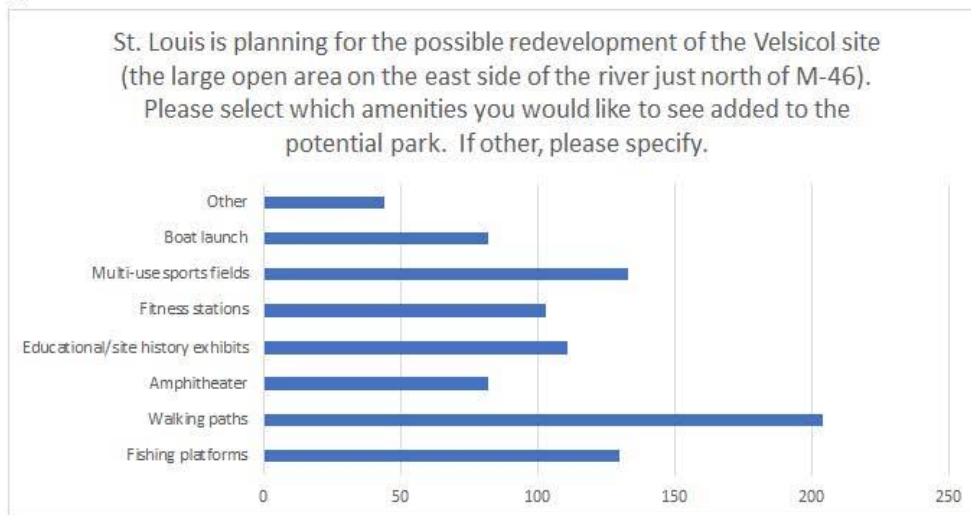


Other responses:

- Skate park: 5
- Pickle ball: 2
- Turf field: 1
- UFC cage: 2
- Paddle ball: 1
- Boat launch north of 46: 2
- Ice skating: 1

- Volleyball: 5
- Benches: 1
- 4 Wheeler Park: 1
- Jump park: 1
- Handicap accessible: 1
- Area for Farmers Market (with shade and parking): 1
- Upgrade/resurface TSN tennis courts and add dimensions for pickle ball: 1
- "little shakes for people to hand out at": 1
- I don't know/none: 4

8.



Other responses:

- Not safe/won't use: 8
- Dog park: 6
- Children's activities: 1
- Wildlife preservation/open space: 3
- Hiking trails: 1
- Splash pad: 4
- Multi-use area: 1
- Volleyball: 2
- Playground: 2
- Baseball/softball: 1
- Turf football: 1
- Basketball court: 1
- UFC Cage: 1
- Skate park: 3
- Paddle ball: 1

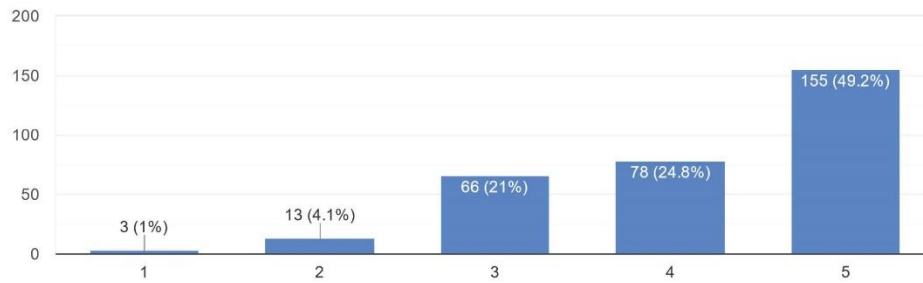
- Docks/beach: 1
- Soccer field: 1
- Public garden: 1
- Solar panels: 1
- Ice skating: 1
- Outdoor movie/concert space: 1
- Don't know: 2

*Comment: Students submitted plans in 2011 to the City with great ideas.

9.

The preservation and restoration of the Pine River and natural areas in our community has a positive effect on the quality of life.

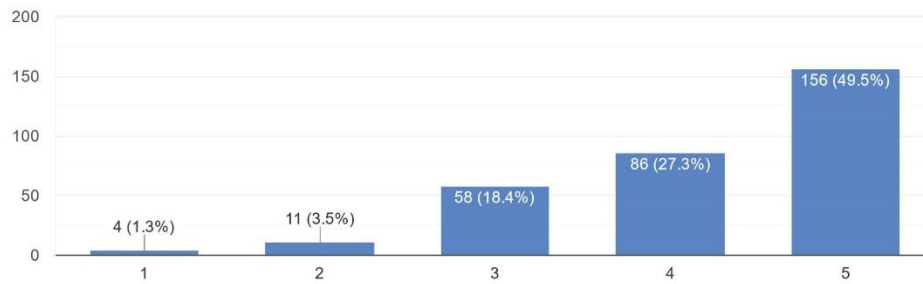
315 responses



10.

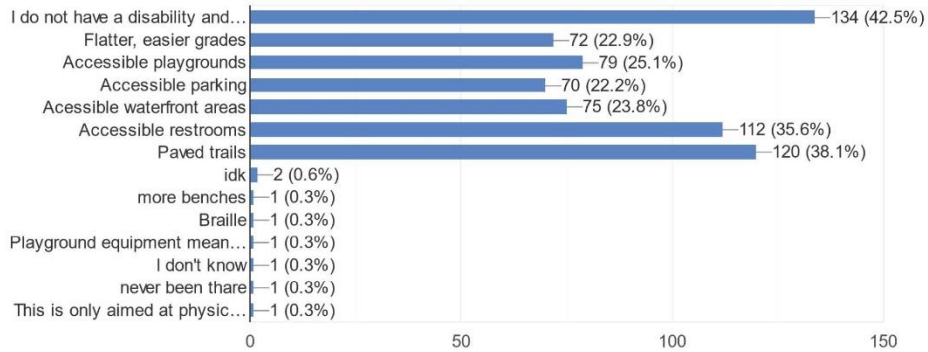
It is important to add more trails and non-motorized pathways in the City of St. Louis.

315 responses



11.

If you or someone you know has a disability, please indicate which of the following would make St. Louis parks more user friendly for you or someone y...ase check all that apply. If other, please specify.
315 responses



Comments:

- Playground equipment meant for autistic children
- This is only aimed at physical disabilities, may want to look at visual and hearing disabilities as well.

12.

What do you like best about parks and recreation in St. Louis? If other, please specify.
315 responses



Comments:

- Variety parks keeps one from getting too crowded.
- We have a pool.
- A basketball court in town by the high school area. And a turf football field.
- Nothing. Their very basic.
- Nothing there all bad
- The view
- Place to hang out with friends: 2
- Boat launch
- Merry-go-round
- Lights
- Peaceful

-Southeast neighborhood feels like it got the short end of the stick with the Lincoln St. park being very underwhelming.

-Don't know/haven't been: 7

13.

What is the one thing you would do to improve parks and recreation in St. Louis? If other, please specify.

315 responses



Other responses (49):

-Never been/I don't know: 5

-None: 1

-Improve playground equipment: 14 (specifically mentioned Lions Park on Michigan Ave., park by high school, park across from 7/11, and Lincoln St. park)

-Clean-up goose poop: 2

-Dog park: 5

-Dog clean-up station: 1

-Fix Velsicol site: 1

-Connect to Ithaca and Alma bike trails: 1

-Repair uneven pathways: 1

-More nature experiences: 1

-Don't raise city taxes to pay for park upgrades: 1

-Restore the river: 1

-Basketball court: 1

-Turf football field: 1

-UFC Cage: 1

-Splash pad: 2

-Restroom: 2

-Vending machines: 1

-Boat launch: 1

-Shoveling paths in winter: 1

-Better patrol of parks for safety: 1

-Cleaner: 1

-Picnic tables, benches: 1

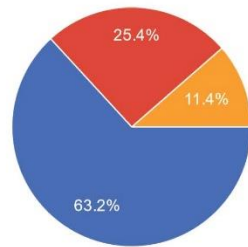
-Handicap accessibility: 2 (especially at fishing area)

-Shaded picnic areas: 1

-Skate park: 1

14.

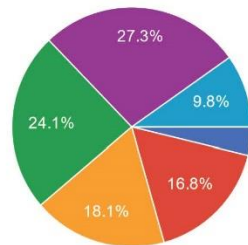
Where do you live?
315 responses



- In the City of St. Louis
- In the St. Louis School District, but outside the City of St. Louis
- Neither

15.

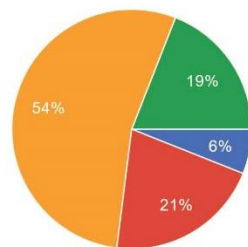
How many years have you lived in St. Louis?
315 responses



- Less than 1
- 1 to 4
- 5 to 10
- 11 to 19
- 20 or more
- I do not live in St. Louis

16.

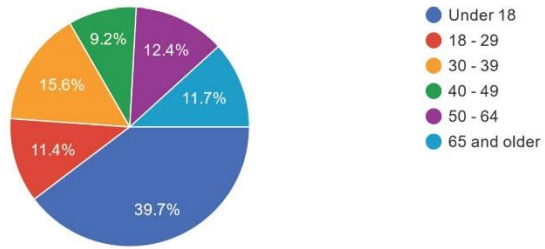
How many people live in your household?
315 responses



- 1
- 2
- 3 to 5
- 6 or more

17.

What is your age?
315 responses



APPENDIX B

Potential Funding Sources for Parks and Recreation Project

POTENTIAL FUNDING SOURCES FOR PARKS AND RECREATION PROJECTS

Funding for the projects described under the Action Program can come from a range of local, State and federal programs. Grant funding is available for parks and recreation projects. However, applicants need to target potential funding agencies and programs very carefully so as to meet the specific criteria required. What follows is a current listing of programs and agencies that can provide funding for parks and recreation projects.

DNR RECREATION GRANTS

Michigan Sparks Grants

Provides grants to local units of government or public authorities legally established to provide public recreation. The grants help local communities across the state who want to create, renovate or redevelop public outdoor opportunities for residents and visitors – especially those communities adversely affected by the COVID-19 pandemic.

Natural Resources Trust Fund

Provides grants to local units of government and to the state for acquisition and development of lands and facilities for outdoor recreation or the conservation of natural resources. This is the only grant program for land acquisition. Requires [5-year recreation plan](#). Must apply through [MiGrants](#).

Boating Infrastructure Grants

Provides federal funding assistance for the design and construction of public recreational harbor facilities serving transient boaters. Local units of government, public universities and private facilities are eligible to apply.

Land and Water Conservation Fund (LWCF)

Provides grants to local units of government and to the state to develop land for outdoor recreation such as: trails, picnic areas, beaches, campgrounds, boating access and fishing areas. Requires [5-year recreation plan](#). Must apply through [MiGrants](#).

Off-Road Vehicle (ORV) Trail Improvement Program

Provides funding for maintenance of established ORV trails and facilities as part of the designated statewide trail system. It also funds development of new trails and facilities, and restoration of areas damaged by ORV use. Government agencies and nonprofit, incorporated clubs and organizations are eligible.

Outdoor Recreation Legacy Partnership Program

Provides matching grants to states and local governments for the development of public outdoor recreation areas and facilities in urban areas.

Recreation Passport Grant Program

Provides funding to local units for the development of public recreation facilities. This includes the development of new facilities and the renovation of old facilities and can also be used for indoor facilities. Must apply through [MiGrants](#).

Waterways Program Grants

Provide financial and technical assistance for design and construction of public recreational boating facilities, including state-sponsored harbor and mooring facilities. Only local units of government and public universities are eligible to apply. Applications require the development of a [5-year recreation plan](#) for harbor projects.

DNR FORESTRY GRANTS

Community Forestry Grants

Provides funds for projects that address the urban forestry needs of municipal governments, schools, nonprofit organizations and volunteer groups throughout Michigan. These projects may include: tree inventories, management plans, tree planting, educational workshops, training materials and Arbor Day activities.

MICHIGAN DEPARTMENT OF TRANSPORTATION PROGRAMS

Safe Routes to School

Safe Routes to School (SRTS) is a school-based international movement to make it safe, convenient and fun for children, including those with disabilities, to bicycle and walk to school.

Transportation Economic Development Fund (TAP)

TAP is a competitive grant program that funds projects such as bike paths, streetscapes and historic preservation of transportation facilities that enhance Michigan's intermodal transportation system, promote walkability, and improve quality of life for Michigan citizens.

OTHER PROGRAMS AND FUNDING SOURCES TO CONSIDER

Specific sports and sports foundations

United States Tennis Association

Funding for tennis courts and programs

www.usta.com

Major League Baseball Youth Development Foundation

Funding for Capital Projects such as field lighting, renovations and construction, education initiatives as well as funds for equipment for schools

www.mlb.com/youth-development-foundation/apply

United States Soccer Foundation

www.ussoccerfoundation.org

Local Grant Sources

Gratiot County Community Foundation

Funding available for recreation and quality of life projects.

Gratiot County Parks & Recreation

Provides funds to local governments for expansion of a community's recreational features.

Other private foundations and endowments

APPENDIX C

Adoption Documentation



MICHIGAN GROUP

AFFIDAVIT OF PUBLICATION
2125 Butterfield Dr, Suite 102N • Troy MI 48084

City Of St Louis
300 N Mill

St Louis, MI 48880
Attention:

STATE OF MICHIGAN,
COUNTY OF ISABELLA

The undersigned Cindy Slater, being duly sworn the he/she is the principal clerk of Morning Sun, themorningsun.com, published in the English language for the dissemination of local or transmitted news and intelligence of a general character, which are duly qualified newspapers, and the annexed hereto is a copy of certain order, notice, publication or advertisement of:

City Of St Louis

Published in the following edition(s):

Morning Sun 12/15/22
themorningsun.com 12/15/22

VICKI ARSENAULT
NOTARY PUBLIC - STATE OF MICHIGAN
COUNTY OF OAKLAND
My Commission Expires May 11, 2026
Acting in the County of _____

Notice of Review
City of St. Louis
DRAFT Five Year Recreation Master Plan

The City of St. Louis has developed a Draft Five Year Parks & Recreation Master Plan. The plan evaluates existing recreation opportunities, reviews public opinion regarding recreation, establishes recreational goals, and proposes a five-year schedule of improvements and other related items that the City wishes to pursue. The plan has been written jointly for the benefit of the residents of the City of St. Louis and the St. Louis School District. A copy of the Draft Plan is available for review at www.stlouismi.com. A copy can also reviewed at City Hall, 300 North Mill Street, St. Louis, MI.

If you are interested in submitting comments regarding the Draft Plan, please send written comments to Mari Anne Ryder, City Clerk at the address above by January 15, 2023.

A public meeting to take input on the draft plan will be held on Tuesday, January 17, 2023 at City Hall, 300 North Mill Street, St. Louis, MI, at 6:00 p.m.

Mari Anne Ryder, City Clerk

Sworn to the subscribed before me this 21 Dec, 2022
Vicki Arsenault
Notary Public, State of Michigan
Acting in Oakland County

Advertisement Information

Client Id: 532032 **Ad Id:** 2413360 **PO:** **Sales Person:** 208112

for eye and skin protection.

9-2: Low

Forecasts and graphics provided by AccuWeather, Inc.



MI LOTTERY

Wednesday
Midday Daily 3: 1-5-8
Midday Daily 4: 8-8-8-2
Daily 3: 9-6-4
Daily 4: 3-2-9-8
Fantasy 5: 5-17-30-31-34
Classic 47: 1-13-22-32-34-40

*12/15/22
ms.*

**Notice of Review
City of St. Louis
DRAFT Five Year Recreation Master Plan**

The City of St. Louis has developed a Draft Five Year Parks & Recreation Master Plan. The plan evaluates existing recreation opportunities, reviews public opinion regarding recreation, establishes recreational goals, and proposes a five-year schedule of improvements and other related items that the City wishes to pursue. The plan has been written jointly for the benefit of the residents of the City of St. Louis and the St. Louis School District. A copy of the Draft Plan is available for review at www.stlouismi.com. A copy can also be reviewed at City Hall, 300 North Mill Street, St. Louis, MI.

If you are interested in submitting comments regarding the Draft Plan, please send written comments to Mari Anne Ryder, City Clerk at the address above by January 15, 2023.

A public meeting to take input on the draft plan will be held on Tuesday, January 17, 2023 at City Hall, 300 North Mill Street, St. Louis, MI, at 6:00 p.m.

Mari Anne Ryder, City Clerk

Mornin

Rick Mills

Local news editor
rmills@medianewsgroup.com
989-779-6003

Jim Ladde

Sports editor
jladde@medianewsgroup.com
989-779-6061

Eric Baerren

Staff reporter
ebaerren@medianewsgroup.com
989-779-6066

For more w
please vi
www.TheMorni

Public Notices

Notice of Review City of St. Louis

DRAFT Five Year Recreation Master Plan (<https://www.stlouismi.com/ccdm-file/2023-2027-parks-recreation-plan-draft-copy/>)

The City of St. Louis has developed a **Draft Five Year Parks & Recreation Master Plan** (<https://www.stlouismi.com/ccdm-file/2023-2027-parks-recreation-plan-draft-copy/>). The plan evaluates existing recreation opportunities, reviews public opinion regarding recreation, establishes recreational goals, and proposes a five-year schedule of improvements and other related items that the City wishes to pursue. The plan has been written jointly for the benefit of the residents of the City of St. Louis and the St. Louis School District. A copy of the Draft Plan is available for review at www.stlouismi.com (<https://www.stlouismi.com>). A copy can also be reviewed at City Hall, 300 North Mill Street, St. Louis, MI.

If you are interested in submitting comments regarding the Draft Plan, please send written comments to Mari Anne Ryder, City Clerk at the address above by January 15, 2023.

A public meeting to take input on the draft plan will be held on Tuesday, January 17, 2023 at City Hall, 300 North Mill Street, St. Louis, MI, at 6:00 p.m.

Mari Anne Ryder, City Clerk

Featured Reports

- PDF 2023-2027 Parks & Recreation Plan–Draft Copy
(<https://www.stlouismi.com/download/9784/2023-2027 Parks & Recreation Plan–Draft Copy.pdf>)
- PDF 2021 Water Quality Report (<https://www.stlouismi.com/download/9293/2021 Water Quality Report.pdf>)
- PDF 2021 Annual Customer Summary
(<https://www.stlouismi.com/download/8676/2021 Annual Customer Summary.pdf>)
- PDF Non-Discrimination Statement (<https://www.stlouismi.com/download/6908/Non-Discrimination Statement.pdf>)
- PDF City of Saint Louis Title VI Plan (<https://www.stlouismi.com/download/6907/City of Saint Louis Title VI Plan.pdf>)
- PDF City Rates and Fees (<https://www.stlouismi.com/download/6418/City Rates and Fees.pdf>)
- PDF Gratiot County Master Plan (<https://www.stlouismi.com/download/6286/Gratiot County Master Plan.pdf>)

Posted on City of St. Louis website 12/15/22



FILE PHOTO

Debbie Stabenow gets a hug from the mascot of Dairy Phil, the ice cream and barbecue stand where she first worked while attending Clare High School. Stabenow graduated the top of her class, and moved to Lansing to attend Michigan State University and start a political career that will end as a U.S. Senator at the end of 2024.

after a year in which they won every major statewide contest and retook both houses of the state Legislature.

**... tied to the
in Mid-Michigan,
ng from Clare
was while she
got her first job
and barbecue**

Morning Sun

Rick Mills
Local news editor
rimills@medianewsgroup.com
989-779-6003

Jim Lahde
Sports editor
jlahde@medianewsgroup.com
989-779-6061

Eric Baerren
Staff reporter
ebaerren@medianewsgroup.com
989-779-6066

Sarah Wright
Staff reporter
swright@medianewsgroup.com
989-779-6050

Greg Nelson
Staff reporter
989-779-6003
gnelson@medianewsgroup.com

For more ways to contact us,
please visit us online at:
www.TheMorningSun.com/Contact

1/6/23



COURTESY PHOTO

d killed a Midland County

the striking vehicle may
have been a light blue col-

City of St. Louis NOTICE OF PUBLIC MEETING

NOTICE IS HEREBY GIVEN that the City of St. Louis shall conduct a public meeting on Tuesday, January 17, 2023 at 8:00 p.m. at St. Louis City Hall, 300 North Mill Street, St. Louis, MI for the purpose of receiving comments on the proposed draft of the St. Louis Five year Parks & Recreation Master Plan. The plan evaluates existing recreation opportunities, reviews public opinion regarding recreation, establishes recreational goals, and proposes a five-year schedule of improvements and other related items that the City wishes to pursue. The plan will be considered for adoption by the City of St. Louis and the St. Louis School District. A PDF copy of the plan is available for review at www.stlouismi.com. A copy of the plan can also be viewed at City Hall, 300 North Mill Street, St. Louis, MI.

All comments, written and oral, will be noted for the record.

Mari Anne Ryder, City Clerk

CITY COUNCIL PROCEEDINGS

St. Louis, Michigan
January 17, 2023

The regular meeting of the Saint Louis City Council was called to order by Mayor Thomas L. Reed on Monday, January 17, 2023 at 6:00 p.m. in the City Hall Council Chambers.

Council Members Present: Mayor Thomas L. Reed, Roger L. Collison, George T. Kubin,
William R. Leonard, Elizabeth A. Upton

Council Members Absent: None

City Manager: Kurt Giles
City Clerk: Mari Anne Ryder
Police Chief: Richard Ramereiz

Others in Attendance:

Keith Risdon – Public Services Director, Phil Hansen – DDA Director, Ken Berthiaume – Auditor, Jamie Long – Finance Department, Ralph Echinaw – St. Louis Sentinel, four St. Louis High School students & 2 parents

City Clerk Mari Anne Ryder led the Pledge of Allegiance.

Public Hearing – 5-year Parks & Recreation Plan.

Mayor Reed opened the Public Hearing at 6:00 p.m.

Mayor Reed asked for Public Comments.

Member Collison stated the plan is put together very well and he appreciates the Parks Commissions efforts and all that were involved.

Mayor Reed thanked Phil Hansen for the work he put into the plan.

Mayor Reed closed the Public Hearing at 6:02 p.m.

Resolution 2023-02 Parks & Recreation Plan Adoption.

The following preamble and resolution was offered by member Leonard, and supported by member Collison:

WHEREAS, the City of St. Louis has undertaken a five-year Recreation Plan which describes the physical features, existing recreation facilities, goals and objectives, and the desired actions

to be taken to improve and maintain recreation facilities during the period between 2023 and 2027 and,

WHEREAS, the plan is written for the benefit of the residents of City of St. Louis and the St. Louis School District,

WHEREAS, an online input survey was made available to the public May 10, 2022 to May 31, 2022 and,

WHEREAS, the draft Recreation Plan was made available for review and public comment from December 16, 2022 to January 15, 2023, and

WHEREAS, a public meeting was held on January 17, 2023 at 6:00 pm, at the St. Louis City Hall to provide an opportunity for citizens to express opinions, ask questions, and discuss all aspects of the Recreation Plan, and

WHEREAS, the City of St. Louis has developed the Recreation Plan for the benefit of the entire community and wishes to use the plan as a document to assist in meeting the recreation needs of the community, and

WHEREAS, on January 9, 2023 the St. Louis Parks and Recreation Commission recommended that the City of St. Louis City Council adopt the Recreation Plan, and

NOW, THEREFORE BE IT RESOLVED on this day that the City of St. Louis adopts said Recreation Plan as a guideline for improving recreation for the residents of the City of St. Louis and the St. Louis School District.

Yeas: Leonard, Collison, Kubin, Upton, Reed
Nays: None
Absent: None
Resolution Declared Adopted

Audit Presentation – Ken Berthiaume.

Ken Berthiaume reported fiscal year end June 30, 2022 audit findings with the Council.

The City was given an Unmodified Opinion, which is the best opinion there is, and thanked members for his work as City Auditor.

Members thanked Ken and thanked Finance Director Bobbie Marr for the great job she and her staff do.

Moved by Kubin, supported by Upton, to accept the Fiscal Year End June 30, 2022 Audit and place on file. All ayes carried the motion.

City Council Minutes.

Moved by Collison, supported by Leonard, to approve the minutes of the Regular Meeting held on January 3, 2023. All ayes carried the motion.

Claims & Accounts.

City Council discussed the Claims & Accounts.

Moved by Collison, supported by Kubin, to approve the Claims & Accounts in the amount of \$617,288.68. All ayes carried the motion.

Monthly Reports.

City Council discussed the December, 2022 Monthly Reports.

Moved by Collison, supported by Upton, to receive the December, 2022 Monthly Reports and place on file. All ayes carried the motion.

Audience Recognition.

There were no comments.

Consent Agenda.

Mayor Reed requested approval/receipt of Consent Agenda items “a” through “i” as shown below:

- a. Change Order No. 4 from Crawford Contracting for m-46 Watermain Upgrades.
- b. Payment No. 7 to Crawford Contracting. for M-46 Watermain Upgrades.
- c. Payment to Berthiaume & Co. for June 30, 2022 Audit.
- d. Payment to Fishbeck for Professional Services – Existing Well Abandonment.
- e. Payment to Etna for Annual Hosting Fee.
- f. Payment to Spicer for Professional Services – Orchard Hills Well Water Disconnect.
- g. Payment to Rite-Way Asphalt for Asphalt Repairs.
- h. Payment to RS Technical Services for Purchase of Chlorine Gas Induction Pump.
- i. Payment to Theka for 2022 Generator Trouble Shooting.

Moved by Upton, supported by Leonard, to approve Consent Agenda items “a” through “i.” All ayes carried the motion.

New Business.

Appointment of City Clerk.

City Manager Giles stated due to the retirement of City Clerk Mari Anne Ryder, management is recommending City Council Members appoint Jamie Long as City Clerk. Jamie's resume was sent to members and the mayor has talked with Jamie.

Mayor Reed stated he agrees with the decision to appoint Jamie Long as City Clerk beginning January 27, 2023.

Moved by Kubin, supported by Leonard, to appoint Jamie Long as City Clerk. All ayes carried the motion.

Members welcomed Jamie.

Re-Appointment to Greater Gratiot Board of Directors.

Manager Giles requested members re-appoint himself as City Manager and Phil Hansen as DDA Director to the Greater Gratiot Board of Directors.

Moved by Collison, supported by Leonard, to re-appoint City Manager Kurt Giles and DDA Director Phil Hansen to the Greater Gratiot Board of Directors. All ayes carried the motion.

Proposal from OHM – Land Surveying Electric Plant/Pool Area.

Manager Giles requested members approve the Proposal from OHM for Land Surveying the Electric Plant/Pool area in the amount of \$9,988.00.

Discussion was held.

Moved by Kubin, supported by Upton, to approve the Proposal from OHM for Land Surveying the Electric Plant/Pool area in the amount of \$9,988.00. All ayes carried the motion.

Proposal from OHM – SPARKS Recreation Grant.

Manager Giles requested approval of the Proposal from OHM for submittal of a SPARKS Recreation Grant in the amount of \$9,100.00.

Discussion was held.

Moved by Upton, supported by Leonard, to approve the Proposal from OHM for submittal of a SPARKS Recreation Grant in the amount of \$9,100.00. All ayes carried the motion.

Power Purchase Commitment Authorization.

Manager Giles requested members approve the Power Purchase Commitment Authorization through MPPA, which is capacity from a battery energy storage system. The commitment is for 10 years, and the forecasted financial commitment is \$111,586.00.

Discussion was held.

Moved by Upton, supported by Kubin, to approve the Power Purchase Commitment Authorization through MPPA in the forecast financial commitment of \$111,586.00. All ayes carried the motion.

Other Business.

There was none.

City Manager Report.

Manager Giles said the Goal Setting Session is Wednesday and due to the amount of information from each department, the Capital Improvement Plan has been printed for them to start reviewing and the rest will be available by Thursday.

Members will be e-mailed when the packet is ready.

City Clerk Report.

City Clerk Mari Anne Ryder stated it has been a pleasure serving Council Members as their clerk and thanked them for allowing her to be clerk for the last 12 of her 25 years as an employee.

Police Chief Report.

Nothing to report.

Council Comments.

Member Collison asked why the fireworks were not on July 4th again this year. Phil Hansen stated there were a lot of positive comments on having the later in July. A lot of people are out of town for 4th. Also, the availability of fireworks due to supply chain and workers makes it harder lately to have them on the 4th.

Member Kubin expressed his appreciation to the clerk.

Member Leonard stated he is a firm believer in hiring within.

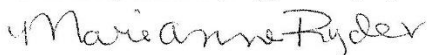
Mayor Reed expressed his appreciation to the clerk and congratulated her.

Public Comments.

There were none.

Adjournment.

Moved by Leonard, supported by Upton, to adjourn at 6:52 p.m. All ayes carried the motion.


Mari Anne Ryder, City Clerk

Resolution of Adoption

2023 - 02

St. Louis Recreation Plan

St. Louis, Michigan

Minutes of a regular meeting of the City of St. Louis, City Council, held on January 17, 2023 at the City Hall, in the City of St. Louis, County of Gratiot at 6:00 p.m.

PRESENT: Mayor Thomas L. Reed, Roger L. Collison, George T Kubin, William R. Leonard, Elizabeth A. Upton

ABSENT: None

The following preamble and resolution was offered by member Leonard, and supported by member Collison:

WHEREAS, the City of St. Louis has undertaken a five-year Recreation Plan which describes the physical features, existing recreation facilities, goals and objectives, and the desired actions to be taken to improve and maintain recreation facilities during the period between 2023 and 2027 and,

WHEREAS, the plan is written for the benefit of the residents of City of St. Louis and the St. Louis School District,

WHEREAS, an online input survey was made available to the public May 10, 2022 to May 31, 2022 and,

WHEREAS, the draft Recreation Plan was made available for review and public comment from December 16, 2022 to January 15, 2023, and

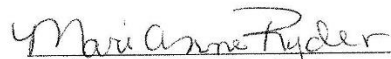
WHEREAS, a public meeting was held on January 17, 2023 at 6:00 pm, at the St. Louis City Hall to provide an opportunity for citizens to express opinions, ask questions, and discuss all aspects of the Recreation Plan, and

WHEREAS, the City of St. Louis has developed the Recreation Plan for the benefit of the entire community and wishes to use the plan as a document to assist in meeting the recreation needs of the community, and

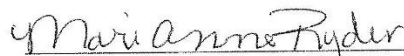
WHEREAS, on January 9, 2023 the St. Louis Parks and Recreation Commission recommended that the City of St. Louis City Council adopt the Recreation Plan, and

NOW, THEREFORE BE IT RESOLVED on this day that the City of St. Louis adopts said Recreation Plan as a guideline for improving recreation for the residents of the City of St. Louis and the St. Louis School District.

Yeas: Leonard, Collison, Kubin, Upton, Reed
Nays: None
Absent: None
Resolution Declared Adopted


Mari Anne Ryder, City Clerk

I, Mari Anne Ryder, Clerk, do hereby certify that the foregoing is a true and original copy of a resolution adopted by the City of St. Louis at a Regular Meeting thereof held on January 17, 2023 at 6:00 p.m.


Mari Anne Ryder, City Clerk

SAINT LOUIS PARKS & RECREATION COMMISSION MEETING
REGULAR MEETING
MONDAY, JANUARY 9TH, 2023

The Regular Meeting of the Saint Louis Parks & Recreation Commission was called to Order by Mary Reed, Chairman at 5:00 P.M.

ROLL CALL:

Members Present: Mary Reed; Dorothy Trgina; Ranae Wolfe; Kristy Hardy; Craig Zeese; and Randy Mead.

Member Absent: Tom Reed.

Others Present: Kurt Giles, City Manager and Phil Hansen, DDA.

APPROVAL OF AGENDA: Motion by Kristy Hardy, Seconded by Randy Mead to approve the Agenda as prepared. Discussion. Motion Carried.

APPROVAL OF MINUTES OF DECEMBER 12TH, 2022 MINUTES;

Motion by Craig Zeese, Seconded by Ranae Wolfe to approve the Minutes of the December 12th, 2022 Parks & Recreation Commission Meeting. Discussion. Motion Carried.

FINANCIAL REPORT; The Financial Report will be placed on file as prepared.

BUSINESS: Consider Resolution Recommending Adoption of the Saint Louis Recreation Plan.

Phil Hansen, DDA lead the discussion of the Saint Louis Recreation Plan. Phil also had large diagrams of the Parks within the City which were passed around for the members of the Commission to review.

Roll Call Vote: Motion by Randy Mead, Seconded by Kristy Hardy, to do a Roll Call Vote on the Recreation Plan.

Mary Reed: Yes

Dorothy Trgina: Yes

Tom Reed: Absent

Ranae Wolfe: Yes

Kristy Hardy: Yes

Craig Zeese: Yes

Randy Mead: Yes.

The Vote was approved and the Resolution will be sent to City Council.

OTHER BUSINESS: Craig Zeese will contact other Cities regarding the Fitness Pads and report back to the Commission.

Craig Zeese brought up the County Park Funds for a possible new project. Discussion about a Pickle Ball Court.

ADJOURNMENT: Ther being no further business to come before the Commission, the Meeting was Adjourned at 5:33 P.M.

The next Parks & Recreation Commission Meeting will be Monday, March 13th, 2023 at 5:00 P.M.

Respectfully submitted,

Dorothy Trgina

Secretary, Parks & Recreation Commission

City of Saint Louis, Michigan

Resolution Recommending Adoption

St. Louis Recreation Plan

St. Louis, Michigan

Minutes of the City of St. Louis Parks and Recreation Commission meeting held on the 9th day of January, 2023, at 5:00 P.M.

Present: Mary Reed, Dorothy Trgina, Ranae Wolfe, Kristy Hardy, Craig Zeese,
Randy Mead

Absent: Tom Reed

The following preamble and resolution were offered by Member Mead, and supported by Member Hardy:

WHEREAS, the City of St. Louis has undertaken a five-year Recreation Plan which describes the physical features, existing recreation facilities, goals and objectives, and the desired actions to be taken to improve and maintain recreation facilities during the period between 2023 and 2027 and,

WHEREAS, the plan is written for the benefit of the residents of City of St. Louis and the St. Louis School District,

WHEREAS, an online input survey was made available to the public May 10, 2022 to May 31, 2022, and

WHEREAS, the draft Recreation Plan was made available for review and public comment from December 16, 2022, to January 15, 2023, and

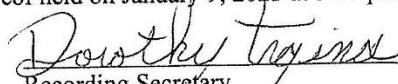
WHEREAS, a public meeting will be held on January 17, 2023 at 6:00 pm, at the St. Louis City Hall to provide an opportunity for citizens to express opinions, ask questions, and discuss all aspects of the Recreation Plan, and

WHEREAS, the City of St. Louis has developed the Recreation Plan for the benefit of the entire community and wishes to use the plan as a document to assist in meeting the recreation needs of the community, and

NOW, THEREFORE BE IT RESOLVED on this day that the St. Louis Parks and Recreation Commission recommends that the St. Louis City Council adopt the Recreation Plan

Yeas: Reed, Trgina, Wolfe, Hardy, Zeese, Mead
Nays: None

I, Dorothy Trgina, Parks & Recreation Commission Recording Secretary, do hereby certify that the foregoing is a true and original copy of a resolution adopted by the St. Louis Parks and Recreation Commission at a Regular Meeting thereof held on January 9, 2023 at 5:00 pm.


Recording Secretary



MICHIGAN GROUP

AFFIDAVIT OF PUBLICATION
2125 Butterfield Dr, Suite 102N • Troy MI 48084

City Of St Louis
300 N Mill

St Louis, MI 48880
Attention:

STATE OF MICHIGAN,
COUNTY OF ISABELLA

The undersigned Cindy Slater Cindy Slater, being duly sworn the he/she is the principal clerk of Morning Sun, themorningsun.com, published in the English language for the dissemination of local or transmitted news and intelligence of a general character, which are duly qualified newspapers, and the annexed hereto is a copy of certain order, notice, publication or advertisement of:

City Of St Louis

Published in the following edition(s):

Morning Sun 01/06/23
themorningsun.com 01/06/23

City of St. Louis
NOTICE OF PUBLIC MEETING

NOTICE IS HEREBY GIVEN that the City of St. Louis shall conduct a public meeting on Tuesday, January 17, 2023 at 6:00 p.m. at St. Louis City Hall, 300 North Mill Street, St. Louis, MI for the purpose of receiving comments on the proposed draft of the St. Louis Five year Parks & Recreation Master Plan. The plan evaluates existing recreation opportunities, reviews public opinion regarding recreation, establishes recreational goals, and proposes a five-year schedule of improvements and other related items that the City wishes to pursue. The plan will be considered for adoption by the City of St. Louis and the St. Louis School District. A PDF copy of the plan is available for review at www.stlouismi.com. A copy of the plan can also be viewed at City Hall, 300 North Mill Street, St. Louis, MI.

All comments, written and oral, will be noted for the record.
Mari Anne Ryder, City Clerk

VICKI ARSENAULT
NOTARY PUBLIC - STATE OF MICHIGAN
COUNTY OF OAKLAND
My Commission Expires May 11, 2026
Acting in the County of _____

Sworn to the subscribed before me this 10 Jan, 2023.

Vicki Arsenault

Notary Public, State of Michigan
Acting in Oakland County

Advertisement Information

Client Id: 532032

Ad Id: 2421350

PO:

Sales Person: 208112

ST. LOUIS PUBLIC SCHOOLS
BOARD OF EDUCATION
Monday, January 16, 2023
Regular Meeting
7:00 PM
High School Media Center
MINUTES

A regular meeting of the St. Louis Board of Education was held in the High School Media Center.

Members present: Mrs. Carrie Salladay, Mrs. Kelly Bebow, Mr. Don Kelley, Mr. John Pavlik, Mrs. Carrie Beeson, Mr. Chad Clark and Mr. Billy Bosquez.

Members absent: none

Others Present: Superintendent Jennifer McKittrick; Administrative Assistant: Diann Woodcock, Administrators: Ben Brock, Bryan Anderson, Steve Taylor, Eugene Binder, Scott Dennison, Stacey Haag; Others: Erin Busch-Grabmeyer, Brian Devine, Grace Devine, Ralph Echtenaw, Connor Hall, Rachel Jewell, Gracie Lombard, Dylan Luft, and Madison Riggs.

The meeting was called to order by President Carrie Salladay

Audience Recognition: None

Former Public Concerns: None

High School Student Council Report: Dylan Luft and Gracie Lombard reported that the High School Student Council Christmas Assembly was a huge success. The Winter Luau Dance will be held on Friday, January 27th after the home basketball game. The students can either pay to attend or bring items to be donated to the Community Cabinet. Plans are being made for the annual Valentine Day Crush Pop Sales.

TSN Student Council Report: Grace Devine reported that the TSN Student Council conducted a door decorating competition in December – congratulations to Mr. Trevino’s Advisor. Monthly meetings are scheduled and plans are being made for Spring Activities.

A motion was made by Member C. Beeson and supported by Member C. Clark to approve the agenda as presented All ayes, motion passed.

It was moved by Member D. Kelley and supported by Member B. Bosquez to approve the minutes from the Regular Meeting held on Monday, December 19, 2022. All ayes, motion passed.

It was moved by Member K. Bebow and supported by Member C. Clark, to approve the monthly activity report as presented. All ayes, motion passed.

It was moved by Member K. Bebow and supported by Member C. Beeson, to approve and pay the board bills in the amount of \$538,496.55. A roll call vote was taken:

C. Salladay	aye	K. Bebow	aye	D. Kelley	aye
J. Pavlik	aye	C. Beeson	aye	W. Bosquez	aye
C. Clark	aye	All ayes, motion passed			

The financial reports were reviewed.

The monthly receipts were reviewed and Diann Woodcock will place them on file.

Clint Clark of the Wolgast Corporation presented the recommended bids for the 2023 Bond Projects: Bid Pack No. 6 Renovations in the amount of \$1,228,369.00. A motion was made by Member K. Bebow and supported by Member C. Beeson to approve the bids as presented. A roll call vote was taken:

C. Salladay	aye	K. Bebow	aye	D. Kelley	aye
J. Pavlik	aye	C. Beeson	aye	W. Bosquez	aye
C. Clark	aye	All ayes, motion passed			

Superintendent Jennifer McKittrick and Business Manager Stacey Haag presented the Amended 2022/2023 General Fund Budget to the Board for approval. The proposed budget includes \$310,000 to be transferred to the Capital Needs Account and funds to provide a retention bonus for all staff members. A motion was made by Member C. Beeson and supported by Member K. Bebow to approve the Amended Budget as presented including the retention bonus for staff. A roll call vote was taken:

C. Salladay	aye	K. Bebow	aye	D. Kelley	aye
J. Pavlik	aye	C. Beeson	aye	W. Bosquez	aye
C. Clark	aye	All ayes, motion passed			

Superintendent Jennifer McKittrick presented the City of St. Louis Recreation Plan – Resolution of Adoption to the Board for approval. A motion was made by Member K. Bebow and supported by Member D. Kelley to approve the plan as presented. All Ayes, Motion Passed.

A motion was made by Member K. Bebow and supported by Member C. Beeson to approve the resignation of Matt Bernia, High School Agri-science Teacher. All Ayes, Motion Passed.

A motion was made by Member B. Bosquez and supported by Member C. Beeson to approve the resignation of Randy Zeilinger, bus driver. All Ayes, Motion Passed.

A motion was made by Member D. Kelley and supported by Member C. Clark to approve, with regrets, the retirement of Connie Parling, TSN Custodian. All Ayes, Motion Passed.

Superintendent's report:

At the Business Professional of American regional event we had 21 students from the high school qualify for BPA state competition in Grand Rapids in March. Students who qualify for the BPA National Competition would be eligible to go to Anaheim California April 26th-30th. Great job to our BOA advisors Mrs. Biehl and Mrs. Reeves.

The end of 1st semester is this Friday, January 20th.

There is an early release on January 25th for staff professional development.

The month of January provides an opportunity for school districts to acknowledge a special group of elected officials in education. It is School Board Recognition month and I want to take the time to recognize the countless hours of work and dedication to the improvements of St. Louis Public Schools that our Board of Education has participated in year after year. This year as a token of appreciation we asked our Woodshop students to make a gift of appreciation for each member of the Board of Education. They made these beautiful cutting boards with an engraved shark on them. Thank you for all that you do and continue to do to lead St. Louis Public Schools.

A motion was made by Member D. Kelley and supported by Member K. Bebow to adjourn. All Ayes, motion passed.

Meeting adjourned

Time: 7:32 p.m.

Submitted by Don Kelley
School Board Secretary

Resolution of Adoption

St. Louis Recreation Plan

St. Louis, Michigan

WHEREAS, the City of St. Louis has undertaken a five-year Recreation Plan which describes the physical features, existing recreation facilities, goals and objectives, and the desired actions to be taken to improve and maintain recreation facilities during the period between 2023 and 2027 and,

WHEREAS, the plan is written for the benefit of the residents of City of St. Louis and the St. Louis School District,

WHEREAS, an online input survey was made available to the public from May 10, 2022 to May 31, 2022, and

WHEREAS, the draft Recreation Plan was made available for review and public comment from December 16, 2022, to January 15, 2023, and

WHEREAS, a public meeting will be held on January 17, 2023 at 6:00 pm, at the St. Louis City Hall to provide an opportunity for citizens to express opinions, ask questions, and discuss all aspects of the Recreation Plan, and


WHEREAS, the City of St. Louis has developed the Recreation Plan for the benefit of the entire community and wishes to use the plan as a document to assist in meeting the recreation needs of the community, and

WHEREAS, on January 9, 2023 the St. Louis Parks and Recreation Commission recommended that the City of St. Louis City Council adopt the Recreation Plan, and

NOW, THEREFORE BE IT RESOLVED on this day that the Board of Education of the St. Louis School District adopt said Recreation Plan as a guideline for improving recreation for the residents of the City of St. Louis and the St. Louis School District.

Yeas: 7
Nays: 0
Absent: 0

I, D. Kelley, Secretary, do hereby certify that the foregoing is a true and original copy of a resolution adopted by the St. Louis Board of Education at a Regular Meeting thereof held on January 16, 2023 at 7:00 p.m.


Secretary



300 North Mill Street • St. Louis, Michigan 48880
(989) 681-2137 • Fax (989) 681-3842 • www.stlouismi.com

January 24, 2023

East Central Michigan Planning & Development
3144 Davenport
Saginaw, MI 48602

To Whom It May Concern:

Please find enclosed the recently adopted Parks & Recreation Plan for the City of St. Louis.

It is being sent according to the Michigan Department of Natural Resources requirements for the Development of Community Parks, Recreation, Open Space and Greenway Plans.

If you have any questions regarding the Plan, feel free to contact me at (989) 681-4377 or kgiles@stlouismi.com

Sincerely,

Kurt Giles
City Manager



300 North Mill Street • St. Louis, Michigan 48880
(989) 681-2137 • Fax (989) 681-3842 • www.stlouismi.com

January 24, 2023

Gratiot County Planning Commission
214 East Center Street
Ithaca, MI 48847

To Whom It May Concern:

Please find enclosed the recently adopted Parks & Recreation Plan for the City of St. Louis.

It is being sent to the Gratiot County Planning Commission according to the Michigan Department of Natural Resources requirements for the Development of Community Parks, Recreation, Open Space and Greenway Plans.

If you have any questions regarding the Plan, feel free to contact me at (989) 681-4377 or kgiles@stlouismi.com

Sincerely,

Kurt Giles
City Manager